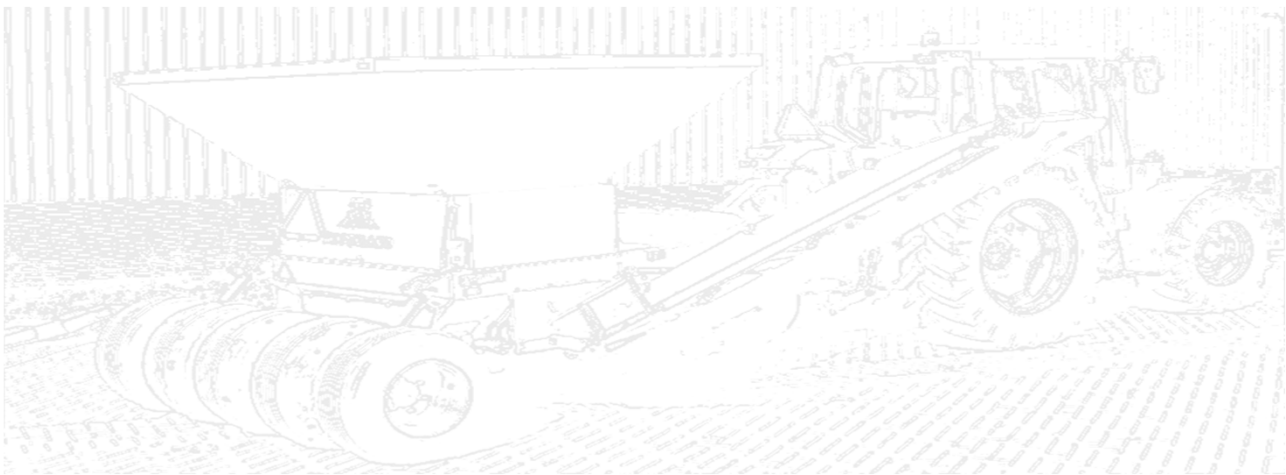
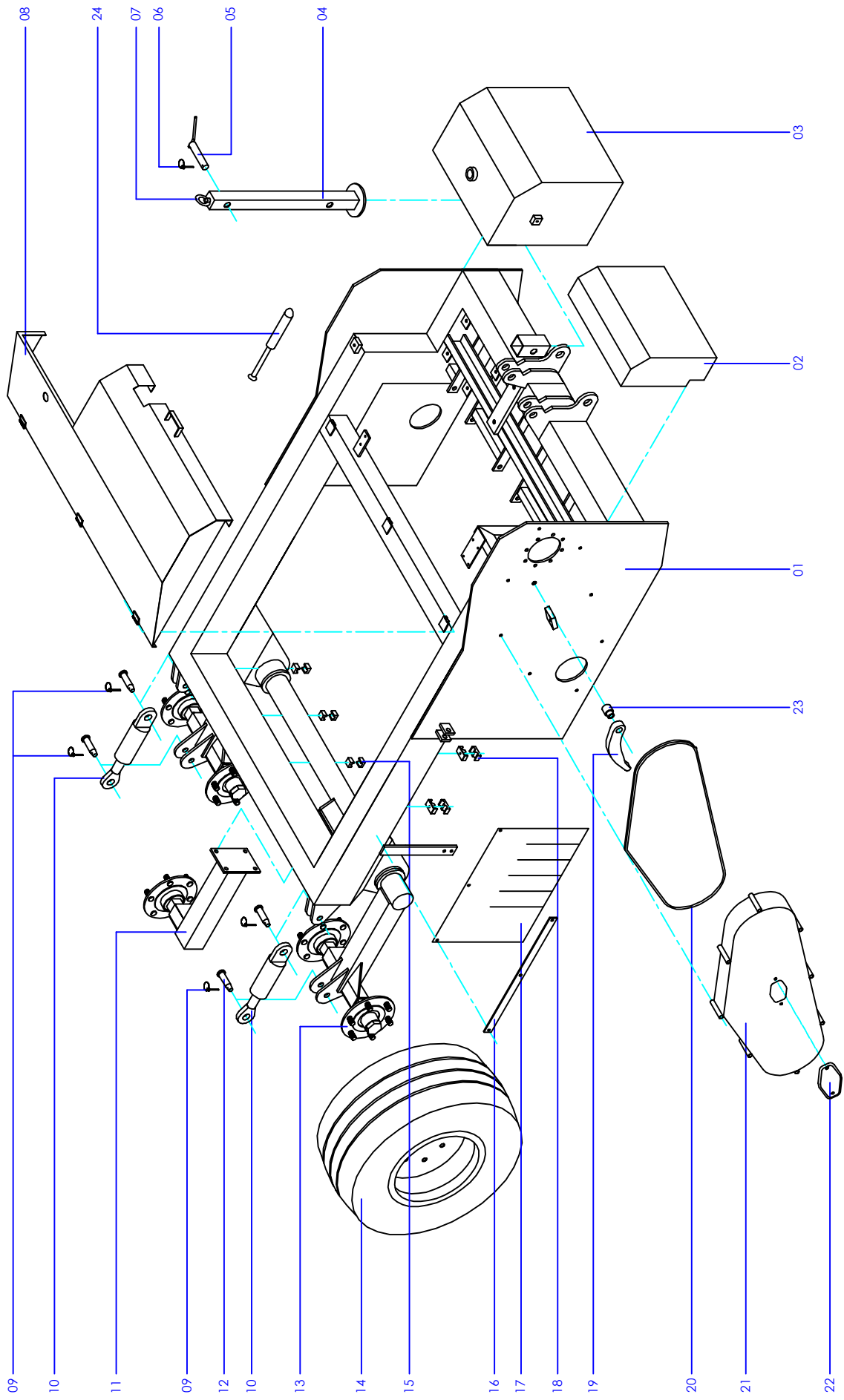


1	Main frame
2	Pole
3	Cutting cover
4	Drive
5	Gearbox
6	Sand mill
7	Sand belt
8	Bunker
9	Flat belt
10	Feed belt
11	Electric components





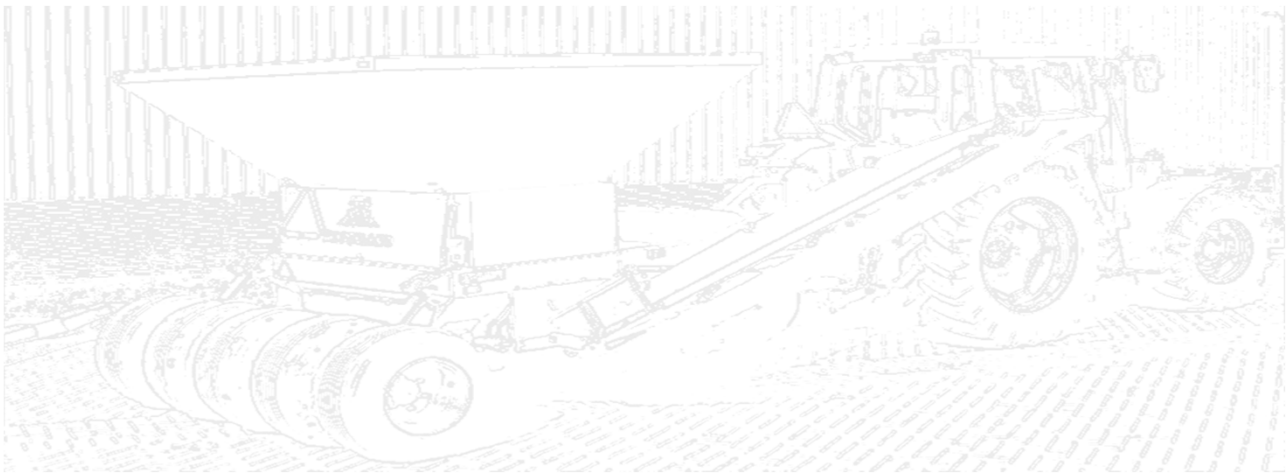
---

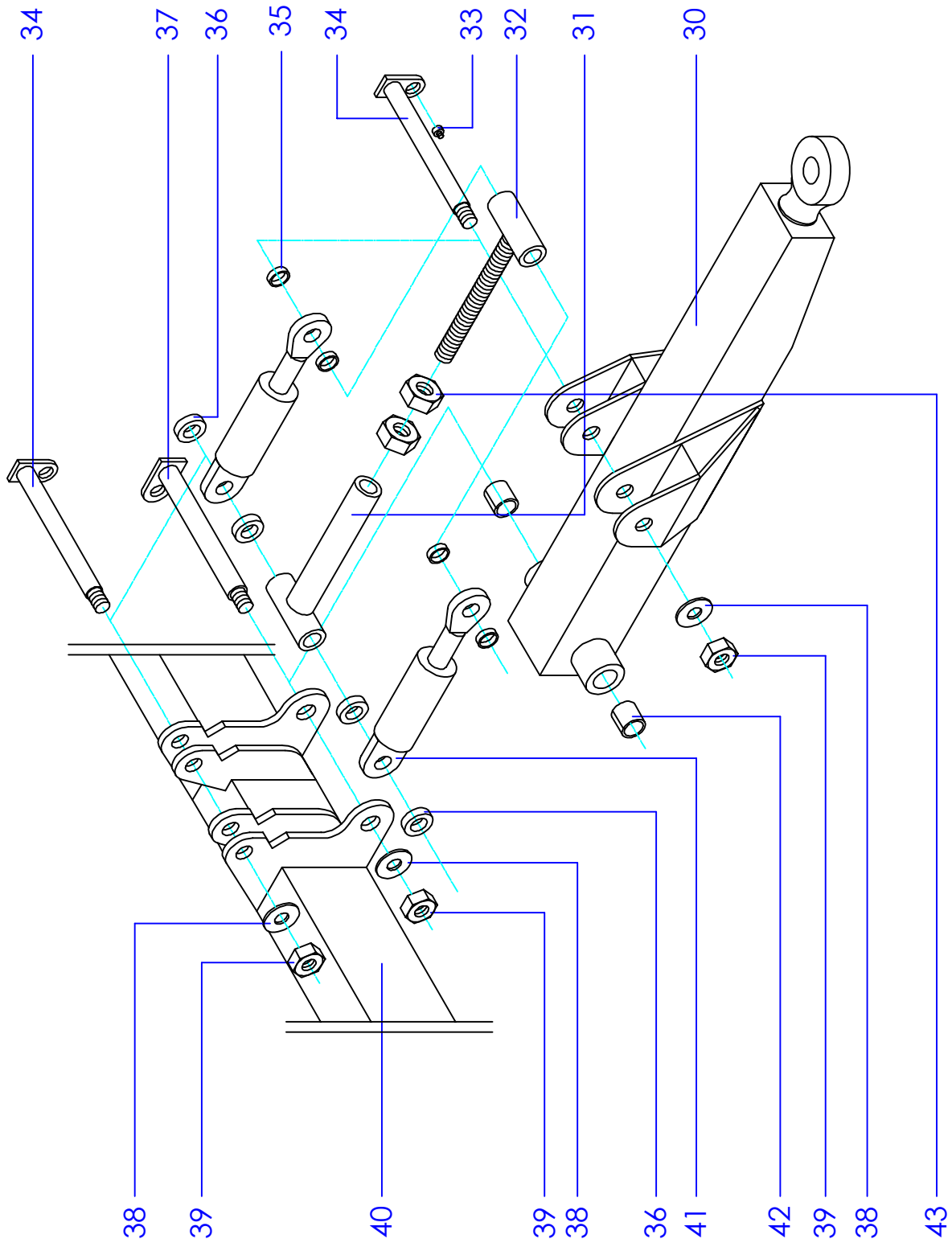
---

## Drawing 01 Main frame

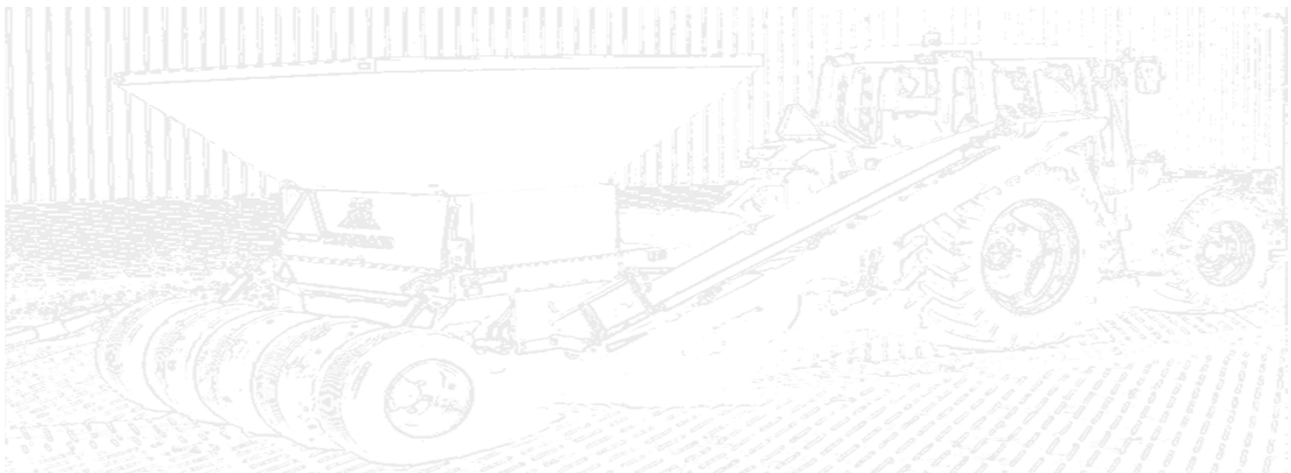
---

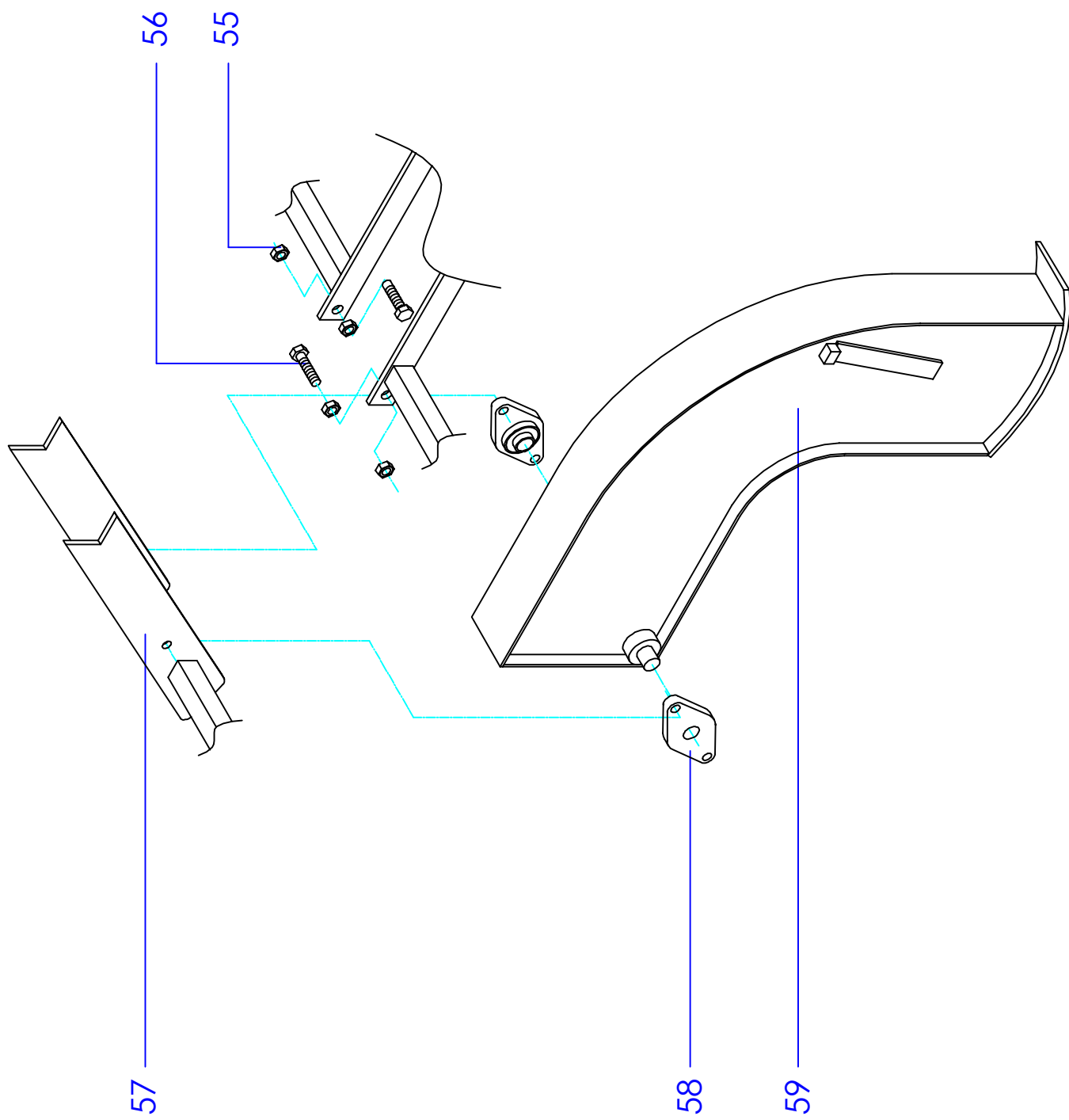
No.	Ordernumber	Name sparepart	Quantity
1		Main frame	1
2		Cover cooler	1
3		Hydraulic oil tank	1
4		Support leg	1
5		Pin	1
6		Lockpin	1
7		Eye	1
8		Protective cover	1
9		Lockpin	4
10		Hydraulic cylinder	2
11		Center wheel support	1
12		Cylinder pin	4
13		Shaft end	5
14		Wheel	5
15		Saddle bracket 1-hole	4
16		Strap	1
17		Rubber mudguard	1
18		Saddle bracket 2-holes	2
19		Chain tensioner	1
20		Sealing rubber	1
21		Chain housing	1
22		Inspection hatch	1
23		Bushing	1
24		Nitrogen cylinder	1





No.	Ordernumber	Name sparepart	Quantity
30		Pole	1
31		Bushing stop	1
32		Thread stop	1
33		Socket screw	1
34		Pole pin	2
35		Bushing	4
36		Bushing	4
37		Pole pin	1
38		Ring M30	3
39		Nut M30	3
40		Main frame	1
41		Hydraulic cylinder	2
42		Clamping bush	2
43		Nut M35	2





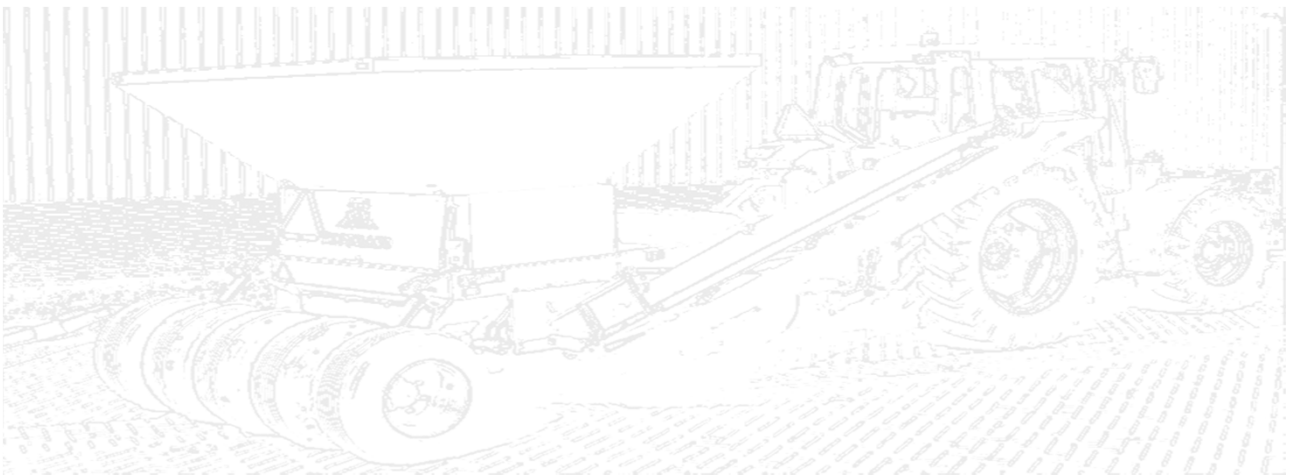
---

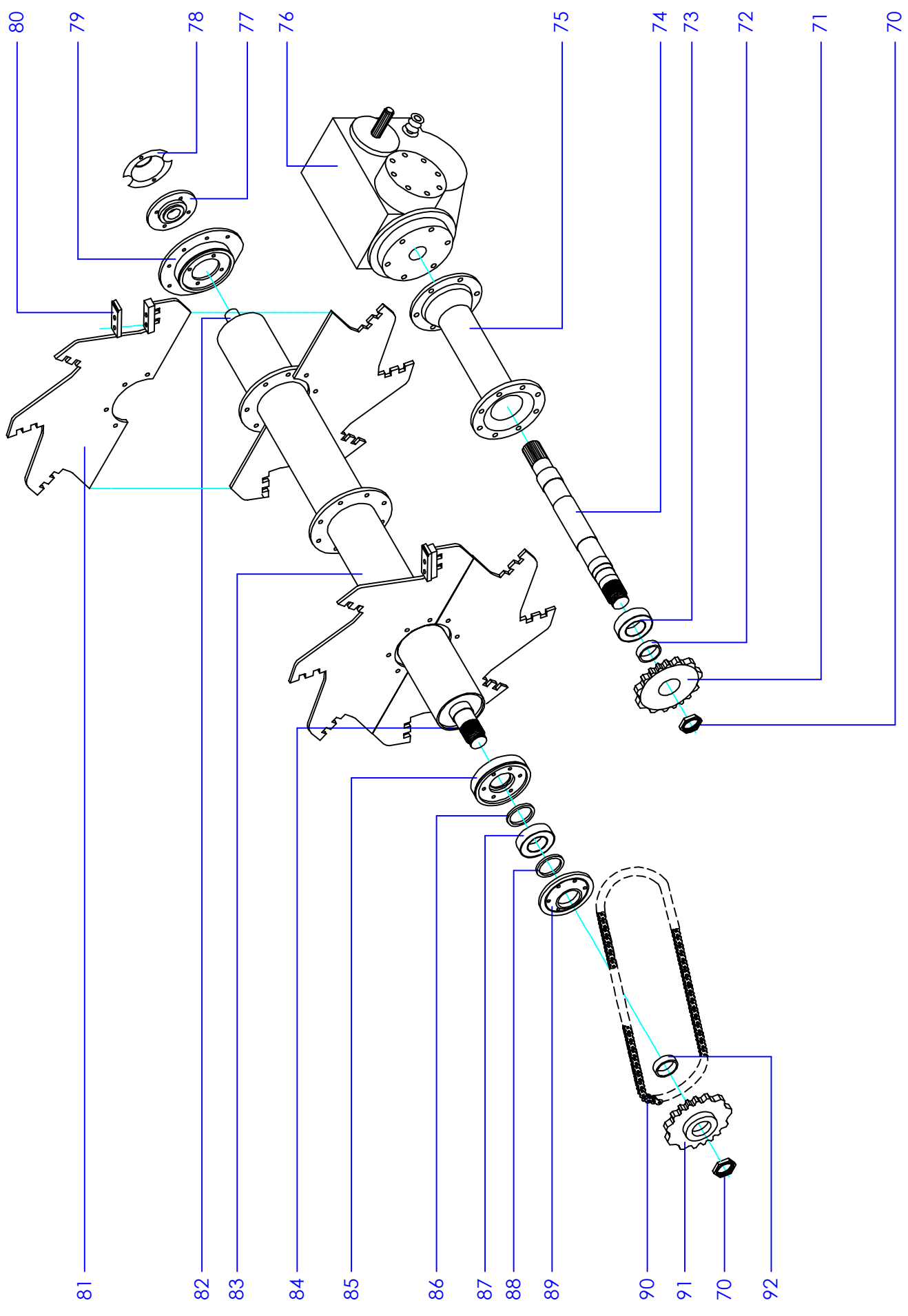
---

## Drawing 03 Cutting cover

---

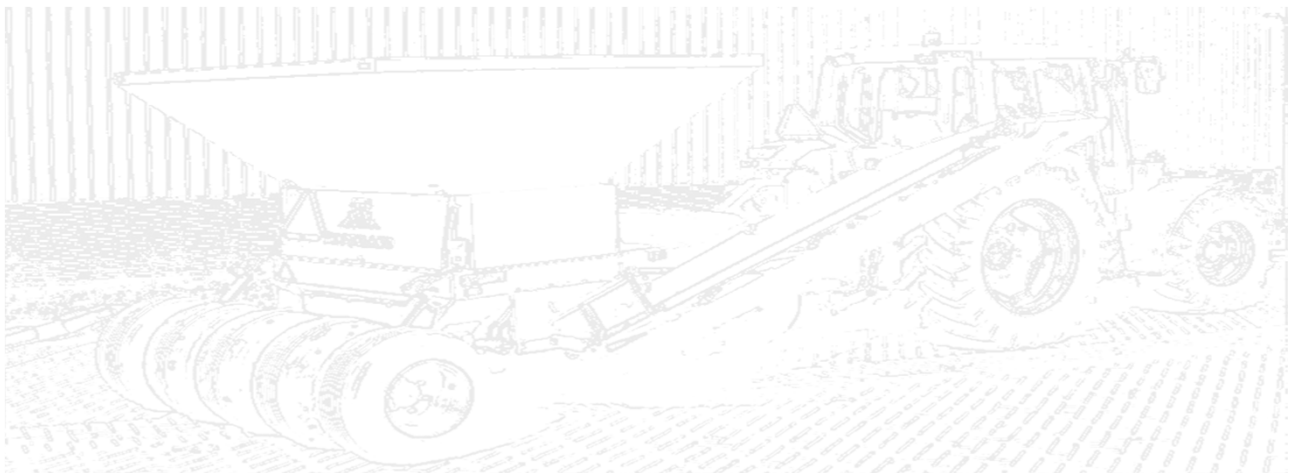
No.	Ordernumber	Name sparepart	Quantity
55		Nut M16	12
56		Bolt M16	6
57		Main frame	1
58		Bearing UCFL 206	6
59		Cutting cover	3

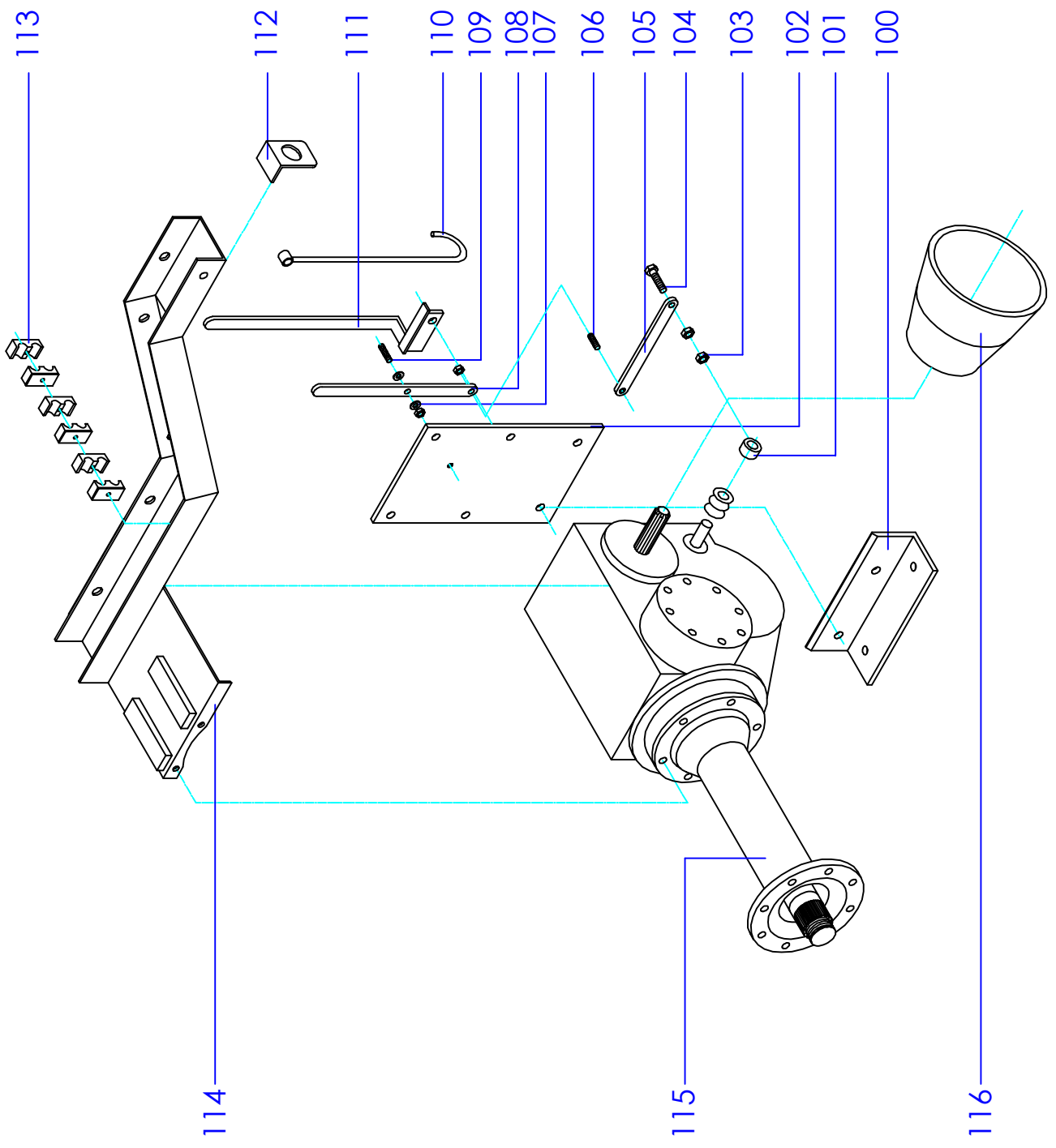




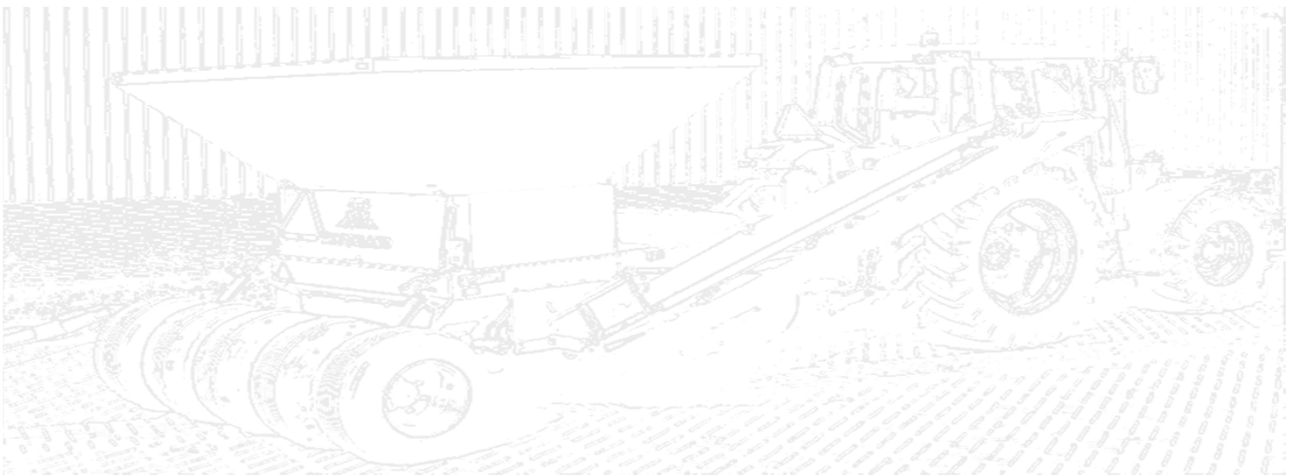


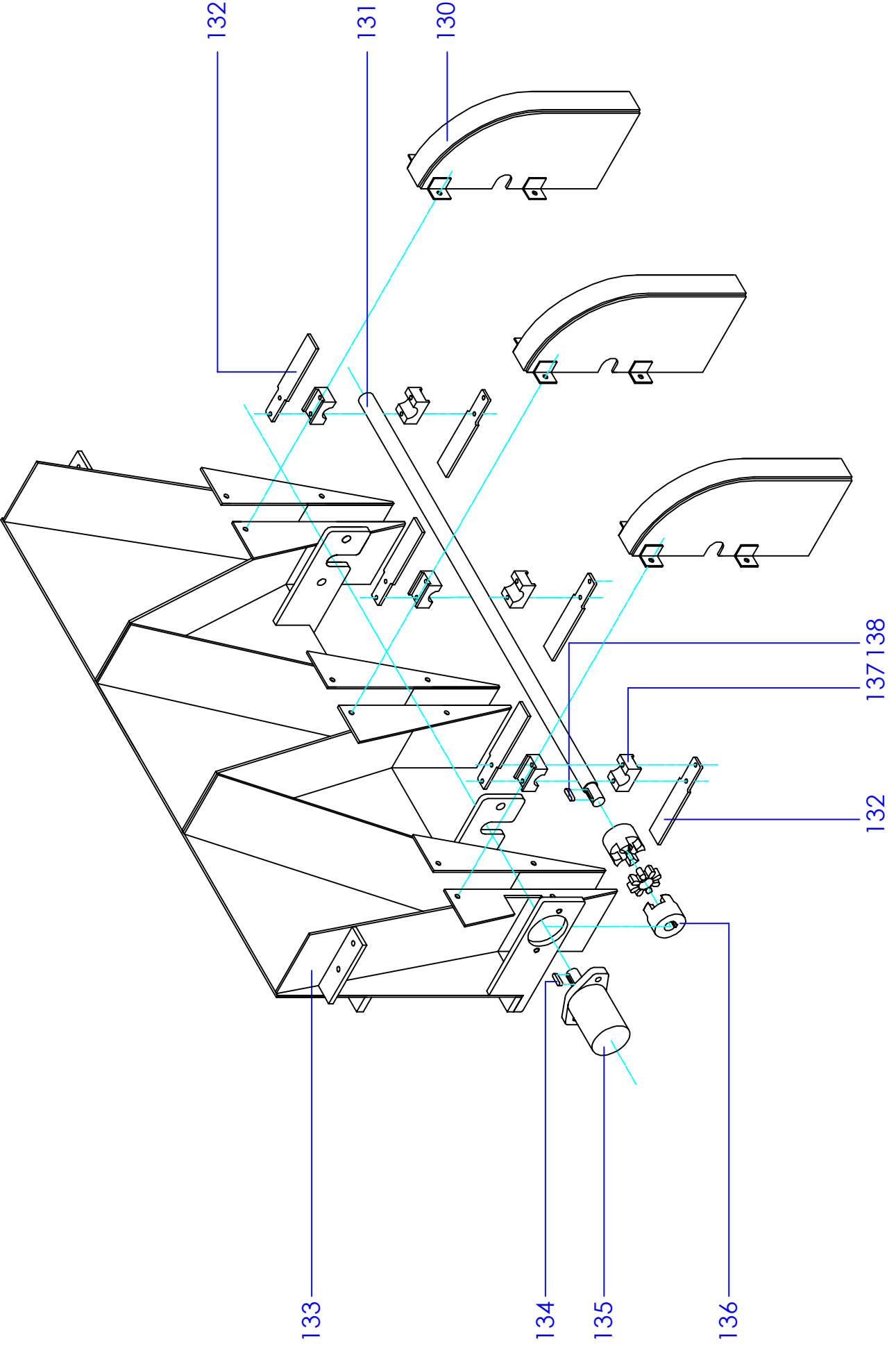
No.	Ordernumber	Name sparepart	Quantity
70		Locknut M50x1,5	2
71		Sprocket wheel 13t	1
72		Distance sleeve	1
72a		Filling Ring	1
73		Bearing UCFC213	1
74		Shaft	1
75		Trumpet	1
76		Gearbox	1
77		Flange bearing	1
78		Guard	1
79		Bearing housing	1
80		Cutter blade	24
81		Bucket wheel	3
82		Shaft end	1
83		Cutter shaft	1
84		Shaft end splain	1
85		Bearing housing inner	1
86		Oil catcher 65x80x8	1
87		Bearing	1
88		Oil catcher 70x85x8	1
89		Bearing housing outer	1
90		Chain 1 3/4 "	1
91		Sprocket wheel 15t	1
92		Distance sleeve	1



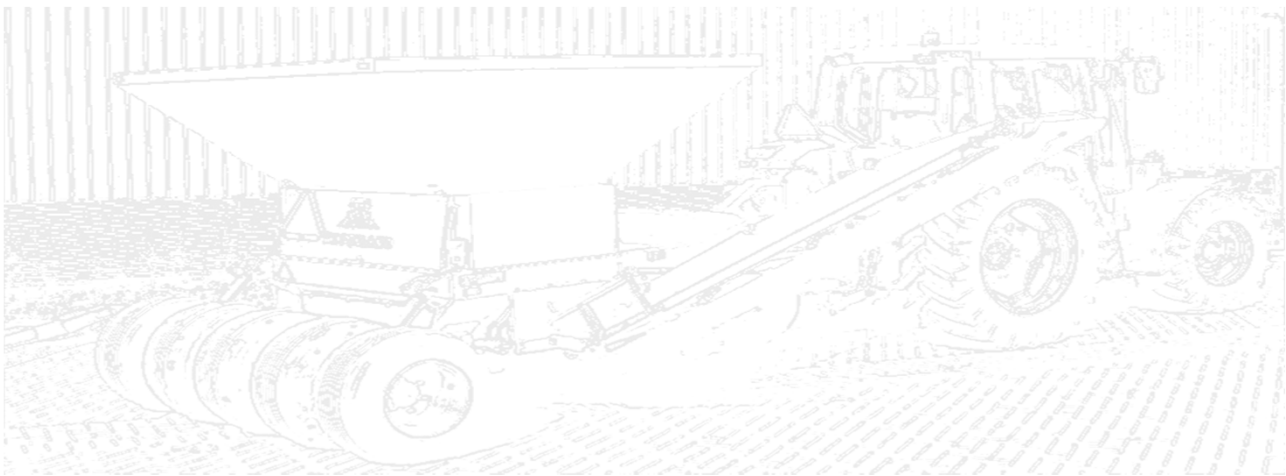


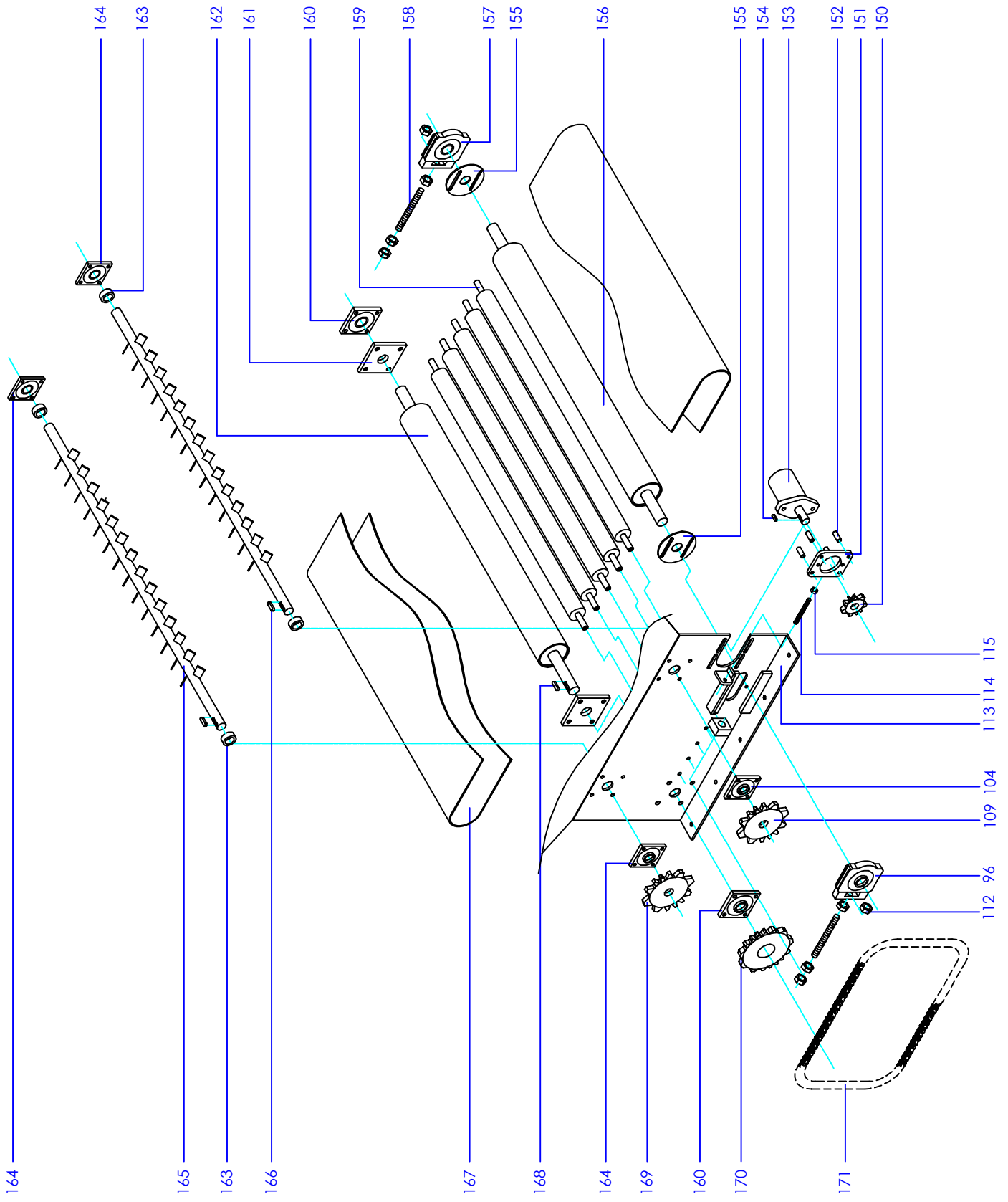
No.	Ordernumber	Name sparepart	Quantity
111		Bracket	1
112		Plug support	1
113		Hose clips	15
114		Cable duct	1
115		Guard coupling shaft	1





No.	Ordernumber	Name sparepart	Quantity
130		Guard	3
131		Shaft	1
132		Scraper	6
133		Funnel	1
134		Cotterpin	1
135		Hydraulic motor OMP25	1
136		Clutch	1
137		Clamp block	6
138		Cotterpin	1
139		Bout M8x80	6





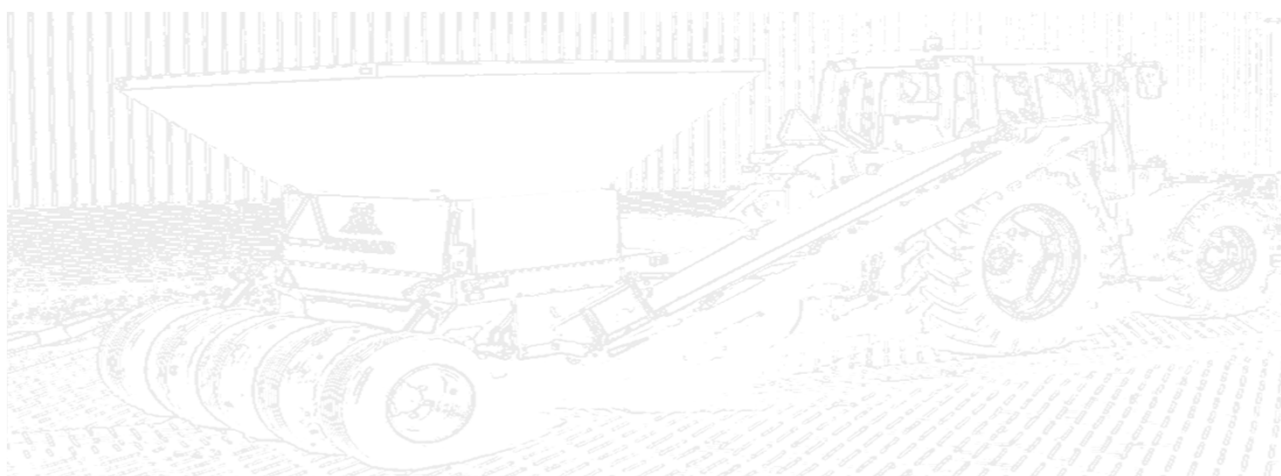
---

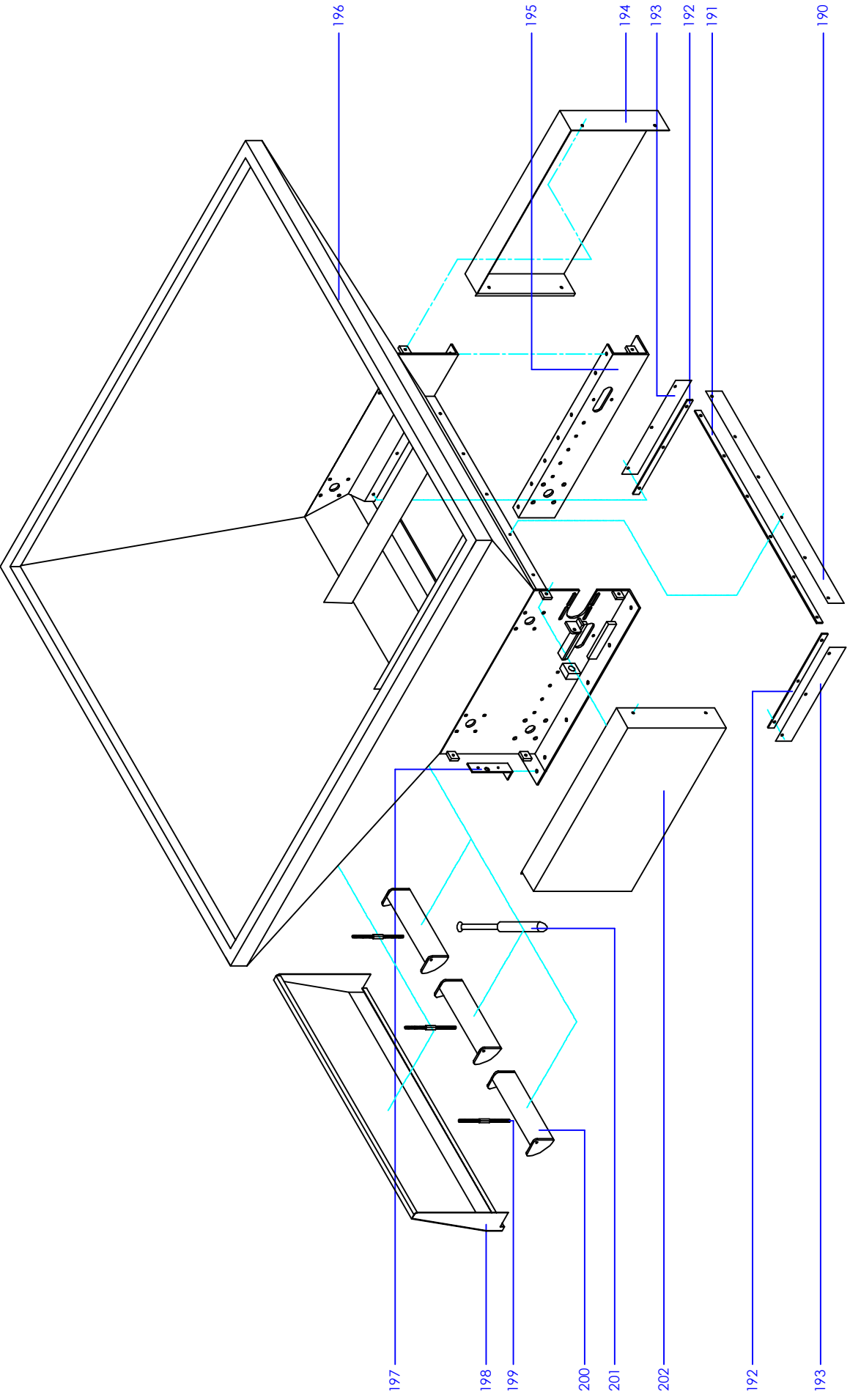
---

## Drawing 07 Sand belt

---

No.	Ordernumber	Name sparepart	Quantity
150		Gear wheel 9t	1
151		Motor support	1
152		Bushing	4
153		Hydraulic motor OMR315	1
154		Cotterpin	1
155		Protection	2
156		Conveyor belt roller	1
157		Bearing UCT208	2
158		Stud M27x300	2
159		Support roller	5
160		Bearing UCF208	2
161		Mounting plate	2
162		Conveyor belt roller driven	1
163		Distance ring	4
164		Bearing UCF207	4
165		Subsoiling attachment	2
166		Cotterpin	2
167		Conveyor belt	1
168		Cotterpin	1
169		Gear wheel 12t	2
170		Gear wheel 19t	1
171		Chain 1/2	1
172		Nut M27	8
173		Sand bunker	1
174		Stud M12	1
175		Nut M12	1





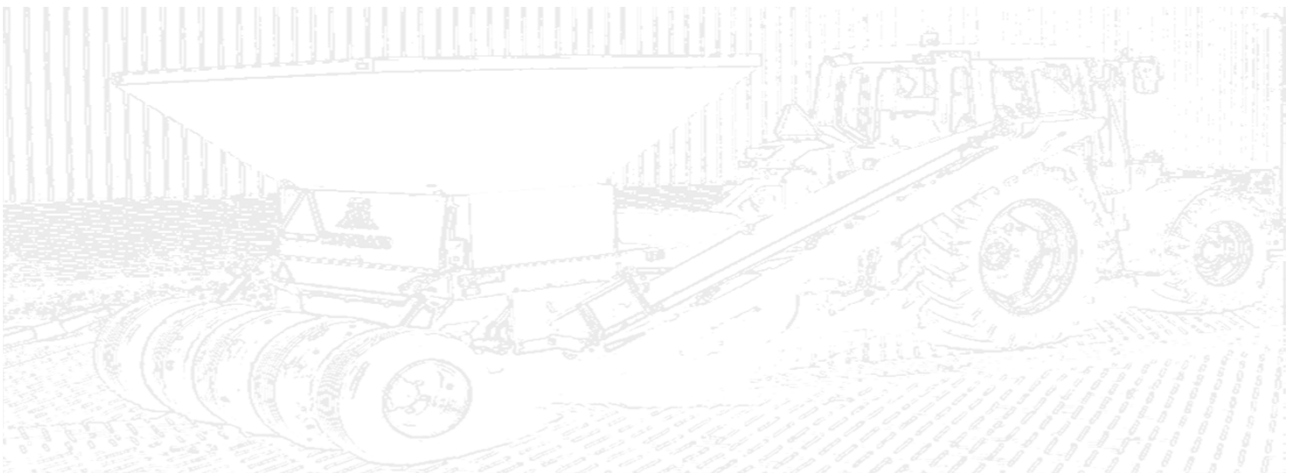


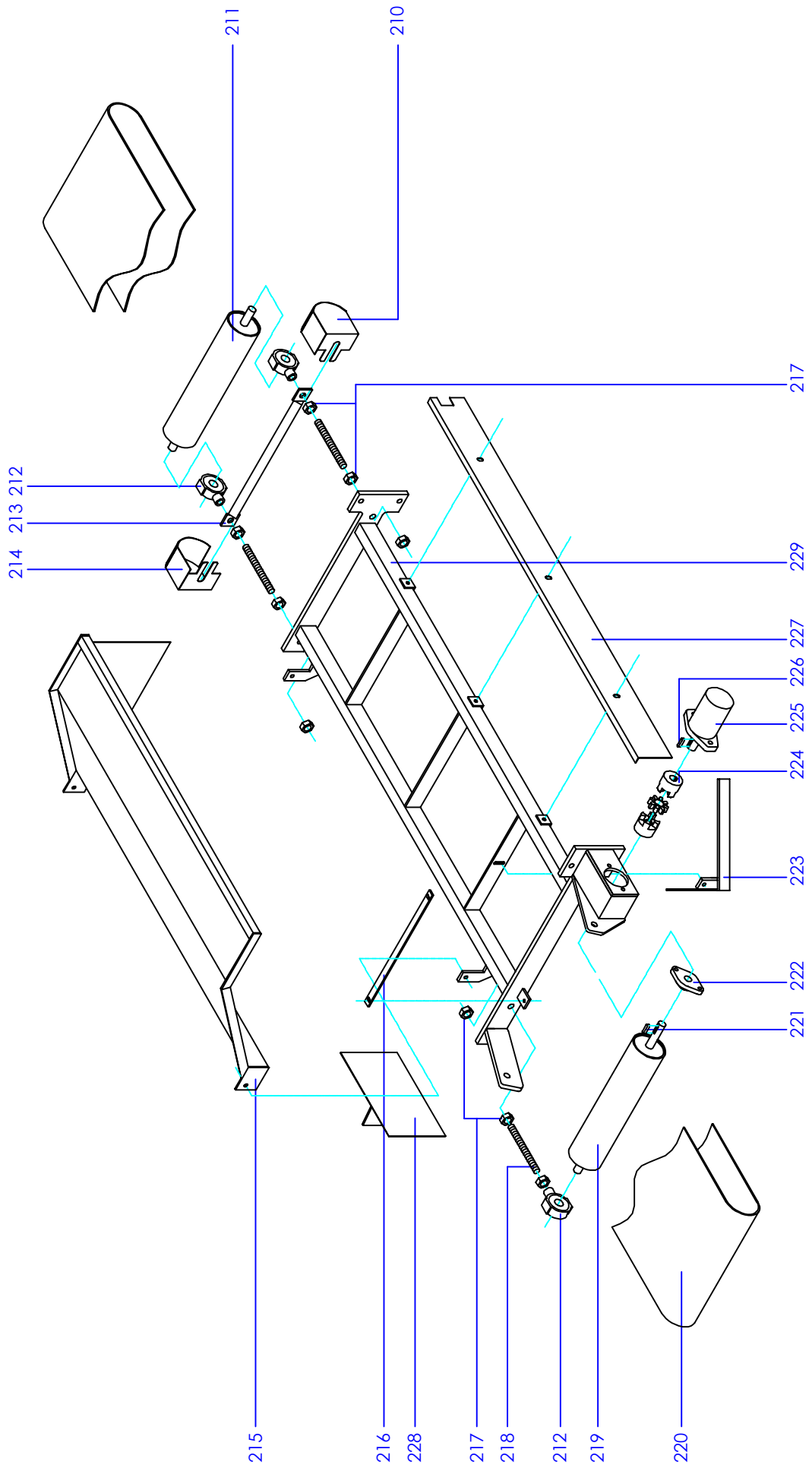
---

## Drawing 08 Sand bunker

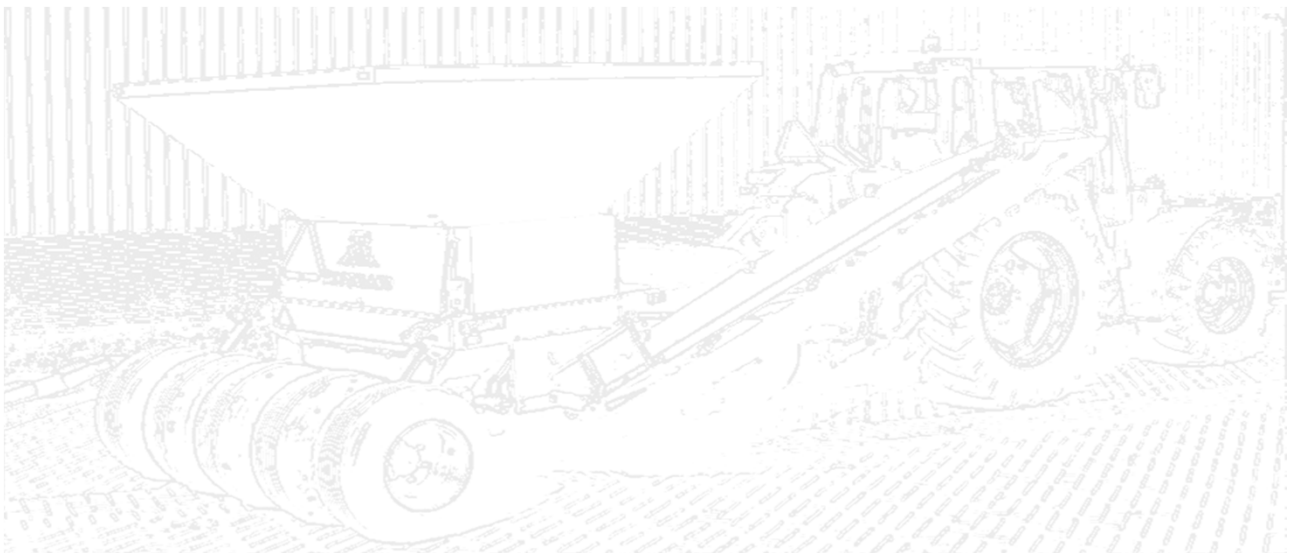
---

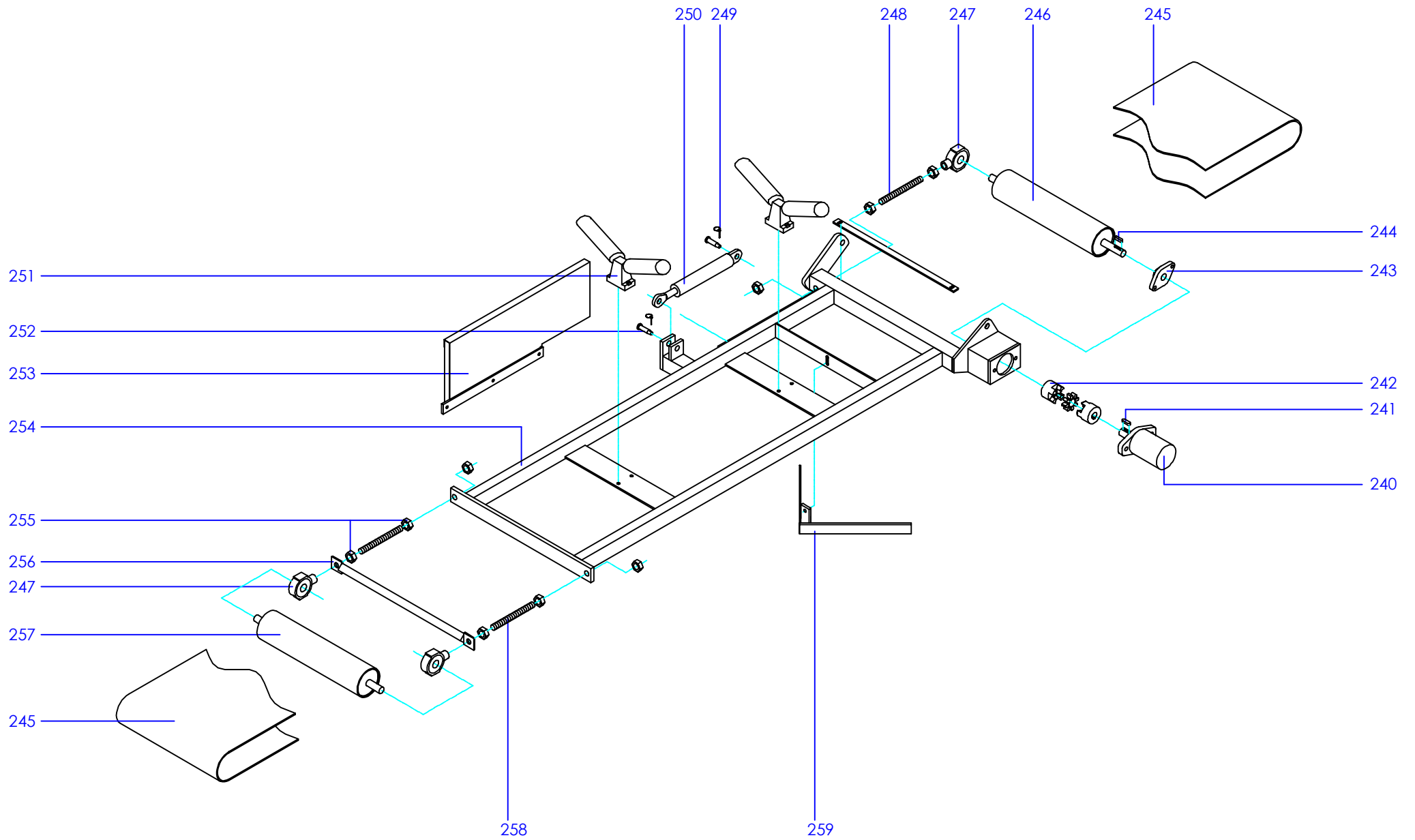
No.	Ordernumber	Name sparepart	Quantity
190		Mudguard	1
191		Strap	1
192		Strap	2
193		Mudguard	2
194		Side cover right	1
195		Bottom plate bunker	1
196		Bunker	1
197		Tail light support	1
198		Rear cover	1
199		Adjustment screw	3
200		Pressure reducers	3
201		Nitrogen cylinder	2
202		Side cover left	1



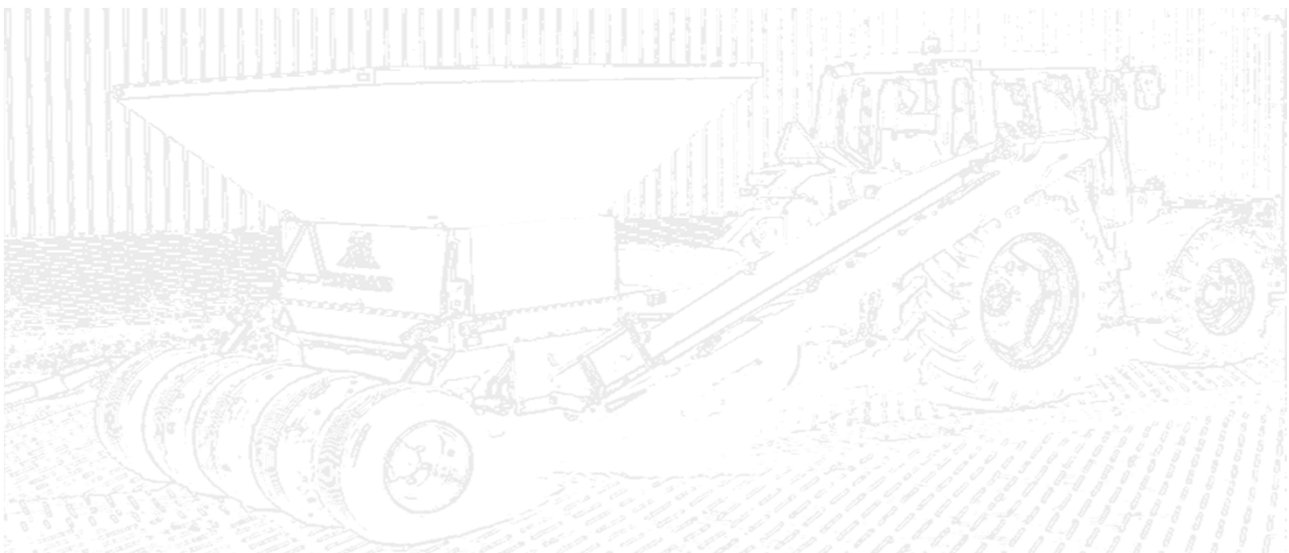


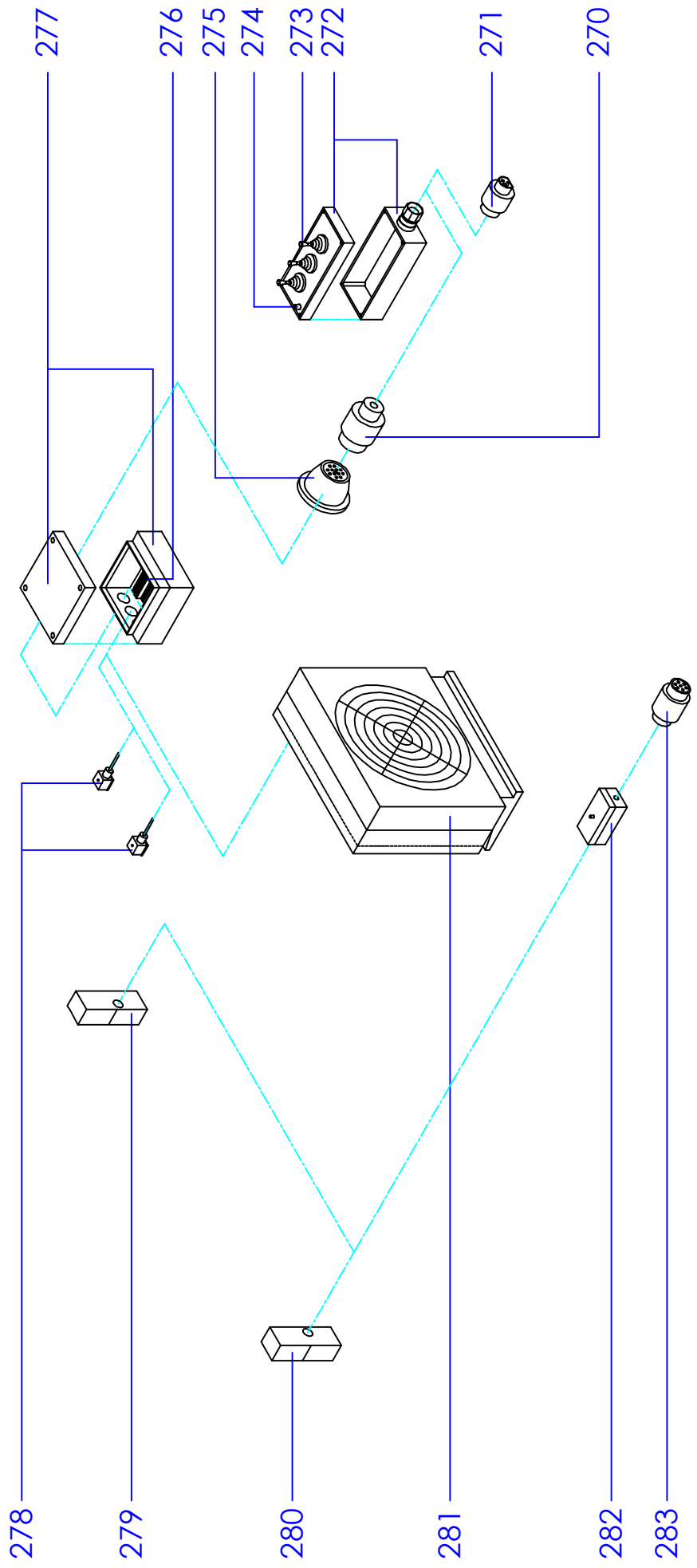
No.	Ordernumber	Name sparepart	Quantity
210		Guard right	1
211		Conveyor belt roller	1
212		Rod head bearing	3
213		Scraper	1
214		Guard left	1
215		Earth catcher cover	1
216		Scraper	1
217		Nut M20	9
218		Stud M20	3
219		Conveyor belt roller driven	1
220		Conveyor belt	1
221		Cotterpin	1
222		Bearing	1
223		Scraper	1
224		Clutch	1
225		Hydraulic motor OMR100	1
226		Cotterpin	1
227		Spatter cover	1
228		Guard	1
229		Conveyor belt frame	1





No.	Ordernumber	Name sparepart	Quantity
240		Hydraulic motor OMR80	1
241		Cotterpin	1
242		Clutch	1
243		Bearing	1
244		Cotterpin	1
245		Conveyor belt with catches	1
246		Conveyor belt roller driven	1
247		Rod head bearing	3
248		Stud M20	2
249		Lockpin	2
250		Hydraulic cylinder	1
251		Trough frame	2
252		Cyl. pin	2
253		Spatter cover	1
254		Frame	1
255		Nut M20	9
256		Scraper	1
257		Conveyor belt roller	1
258		Stud M20	1
259		Scraper	1





---

---

## Drawing 11 Electric components

No.	Ordernumber	Name sparepart	Quantity
270		Plug 13-cores	1
271		Plug 3-cores	1
272		Waterproof box	1
273		Control switch	3
274		Light	1
275		Female plug 13-cores	1
276		Multiplug	1
277		Waterproof box	1
278		Plug	7
279		Rear light right	1
280		Rear light left	1
281		Cooler	1
282		Waterproof box	1
283		Plug 7-cores	1

