



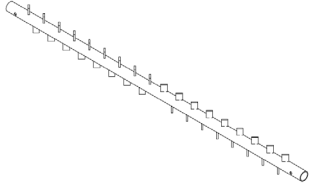
Parts list Infiller

IF150

V230621

Wearing parts

Slijtdelen



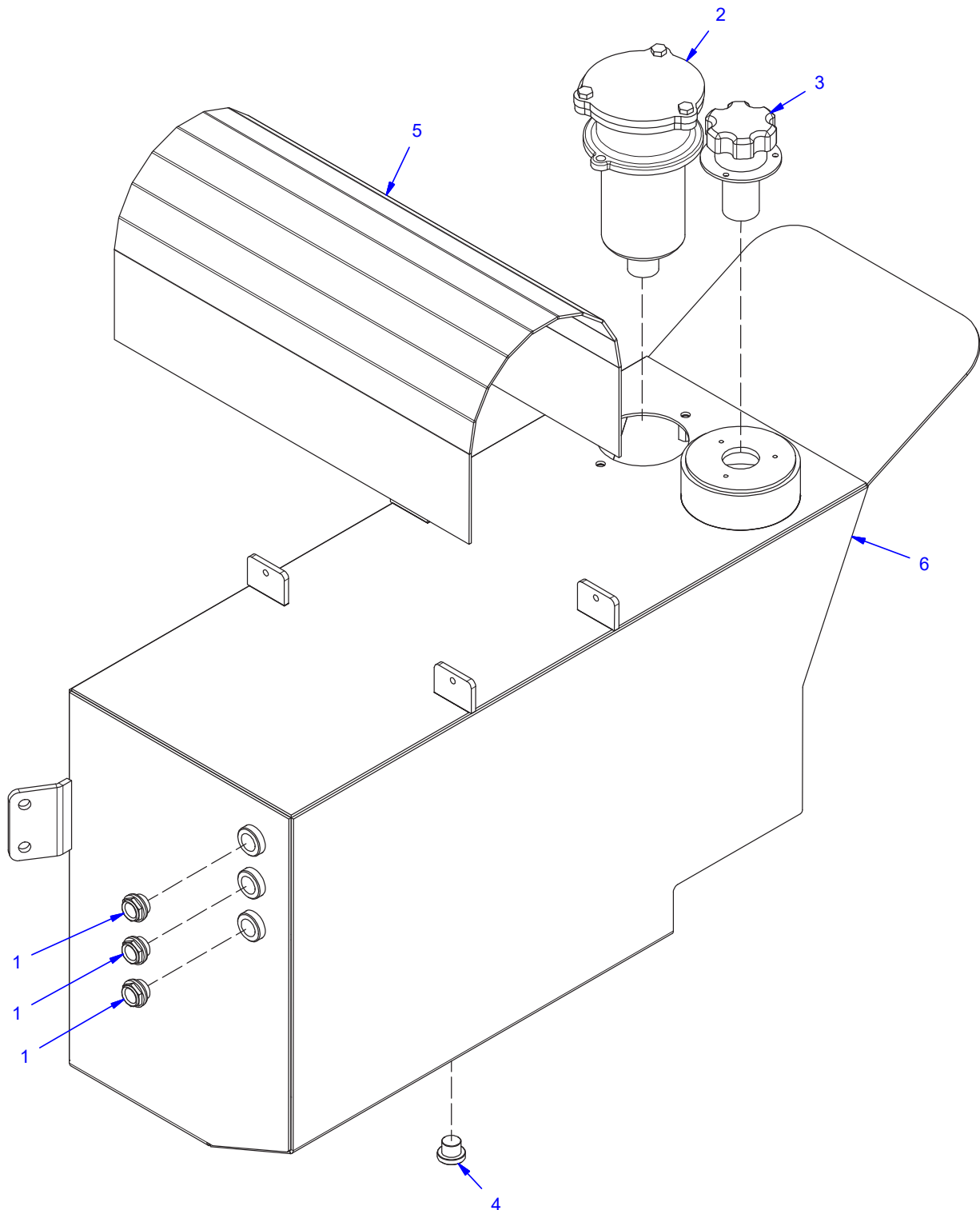
1

Item	Quantity	Part number	Description	Omschrijving
1	4	IF15.02.02	Weiler tube	Woeler buis

Hydraulic tank

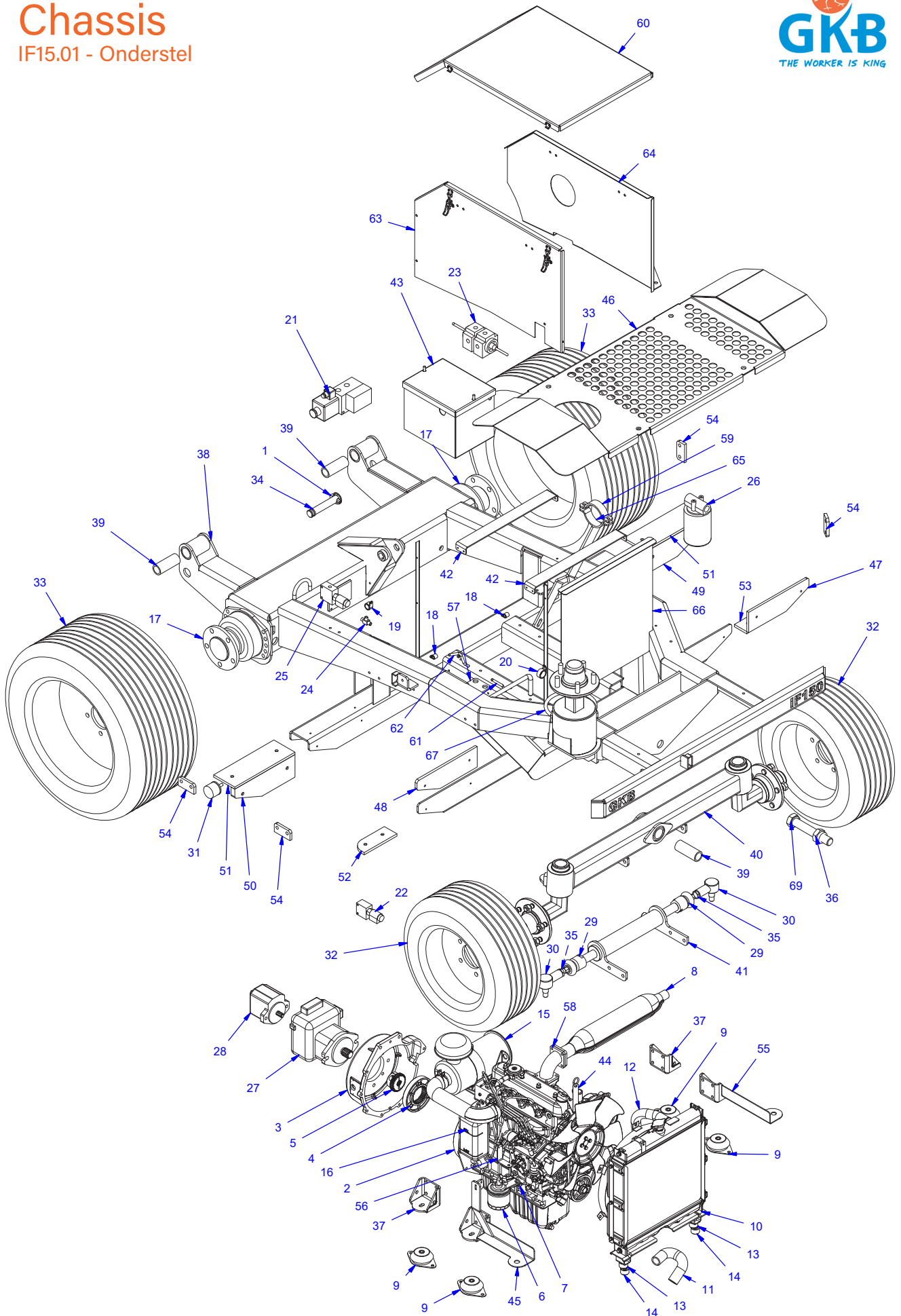
IF15.03.01 - Hydrauliektank

Item	Quantity	Part number	Description	Omschrijving
1	3	0507-0001	Oil level window 1/2" BSP aluminium	Olieniveau oog 1/2" BSP aluminium
2	1	0508-0005	Tank return filter OMTF111C25	Tankretourfilter OMTF111C25
3	1	0514-0002	Filling air filter 118/5/96 oil for hydraulic tank	Vul beluchtingfilter 118/5/96 oil voor hydrauliek tank
4	1	0516-0001	Blind stop 1/2 BSP	Blindstop 1/2 BSP
5	1	IF15.03.007	Heat shield perfo plate	Hitteschild Perfoplaat
6	1	IF15.03.03	Hydraulic tank	Hydraultank



Chassis

IF15.01 - Onderstel



Chassis

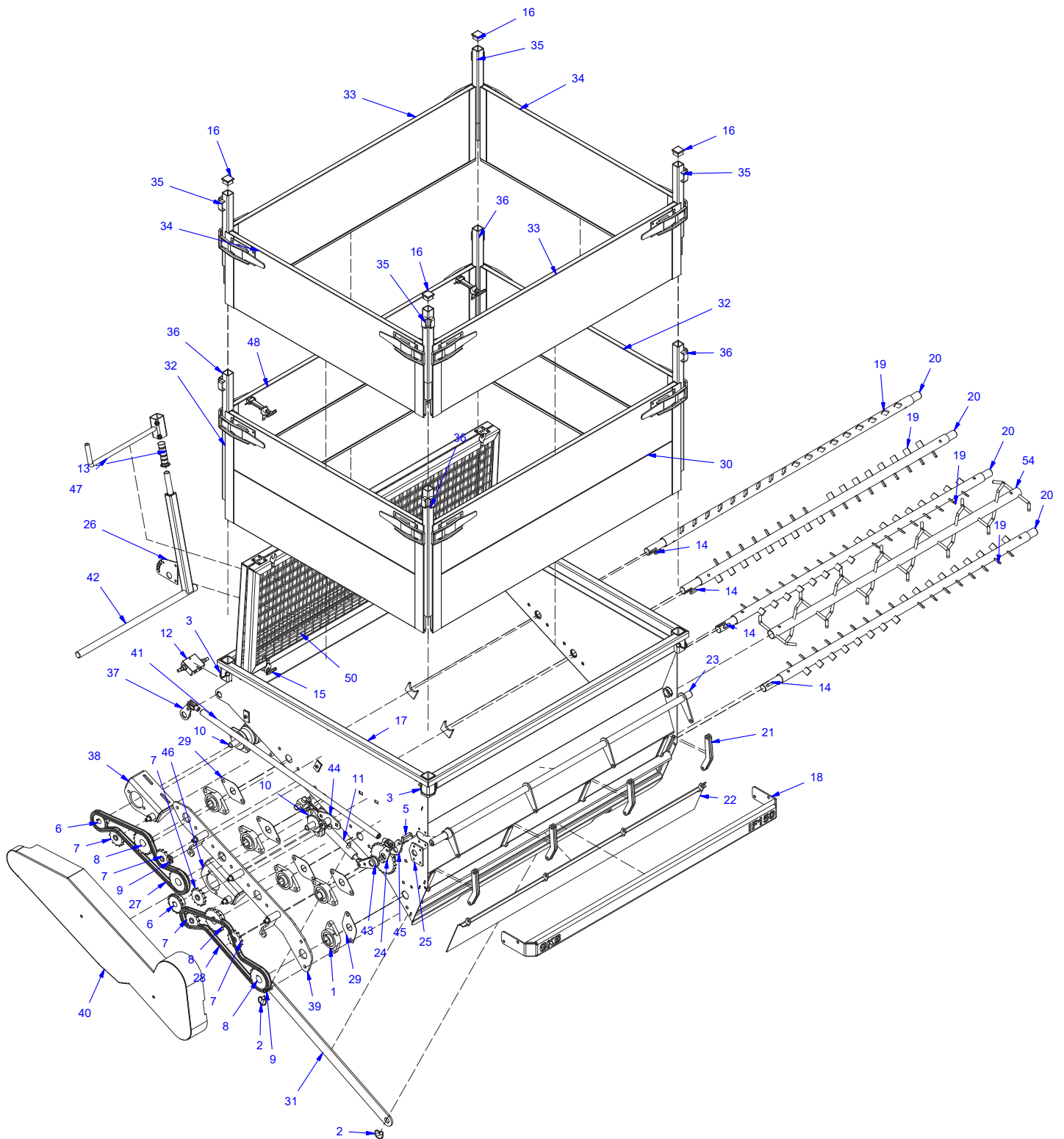
IF15.01 - Onderstel



Item	Quantity	Part number	Description	Omschrijving
1	1	0305-0001	Pin 11mm	borgpen 11mm
2	1	0416-0001	Engine block Kubota V1505 without turbo	Motorblok Kubota V1505 zonder turbo
3	1	0416-0001-10	adapter plate	adaptorplaat
4	1	0416-0001-11	adapter hydraulic pump	adaptor hydropomp
5	1	0416-0001-12	Sprocket hydraulic pump	tandwiel hydraupomp
6	1	0416-0001-13	Fuel filter	brandstof filter
7	1	0416-0001-14	Support fuel filter	brandstof filter steun
8	1	0416-0001-15	Exhaust pipe	uitlaat
9	4	0416-0001-2	Vibration damper machine feet Type HD	Trillingsdemper Machine voet Type HD
10	1	0416-0001-3	Air filter	Luchtfilter
11	1	0416-0001-4	Radiator hose 1	Radiator slang 1
12	1	0416-0001-5	Radiator hose 2	Radiator slang 2
13	2	0416-0001-6	Vibration damper radiator	Trillingdemper radiator
14	2	0416-0001-7	Vibration damper radiator 2	trillingdemper radiator 2
15	1	0416-0001-8	Air filter	Luchtfilter
16	1	0416-0001-9	Coolant tank	koelvloeistof tankje
17	2	0501-0027	TPV3200 Hansa Hydraulic pump	Hydromotor wielmotor 255cc Plungermotor
18	3	0504-0021	Hose clamp 8mm	Leidingklem 8mm
19	1	0504-0022	Hose clamp 18mm	Leidingklem 18mm
20	1	0504-0023	Hose clamp 25mm	Leidingklem 25mm
21	1	0506-0021	Serial/parallel GSV19-B5G-F-12	Serie/parallel GSV19-B5G-F-12
22	1	0506-0024	2-2 valve 1-4'' NO 1vdc + power plug	2-2 ventiel 1-4'' NO 1vdc + stekker
23	1	0506-0025	8-way faucet d-plug 3/8"	8-wegkraan d-plug 3/8"
24	1	0506-0026	T-change valve 08L	T-Wisselklep 08L
25	1	0506-0028	3-2 vent 1-4'' 1vdc + power plug	3-2 ventiel 1-4'' 1vdc + stekker
26	1	0508-0006	TPV3200 Hansa Hydraulic pump	Zuigfilter OMT105ANA
27	1	0512-0002	Roquet 10,6 cc chain sprocket pump	TPV3200 Hansa Hydrau pomp
28	1	0512-0003	Radiator hose 1	Roquet 10,6 cc tandwielpomp
29	2	0604-0004	Axial ball head ZF 0750125014	Axiaalkogelkop ZF 0750125014
30	2	0604-0005	Steering ball SHP068KR	Stuurkogel SHP068KR
31	1	0801-0004	Vibration damper 5040 M10	Trillingsdemper 5040 M10
32	2	1301-0024	Wheel with tyre BKT LG-306 23x8.50 -12 6PR TL NHS	wiel met band BKT LG-306 23x8.50 -12 6PR TL NHS
33	2	1301-0025	Wheel with tyre BKT AW 702 13.0/55 -16 149A6 18PR	wiel met band BKT AW 702 13.0/55 -16 149A6 18PR
34	1	1401-0011	Top link pin 25,4x117	Topstangpen 25,4x117
35	2	9904-0012	Hex nut low M18x1,5	Moer zeskant laag M18x1,5
36	1	Borgmoer M30 - DIN 985 Staal ELVZ	Hex nut M30 - DIN 985	M30 - DIN 985 Staal ELVZ
37	2	IF15.01.002	Support motor	Motorsteun
38	1	IF15.01.01	Frame	Frame
39	3	IF15.01.015	Support bearing bush container 40x5 L=100mm	lagerbus ophanging bunker 40x5 L=100mm
40	1	IF15.01.02	Front axle	Vooras
41	1	IF15.01.03	Steering cilinder	Stuurcilinder
42	2	IF15.01.039	Bonnet coupling plate	Motorkap koppelstrip
43	1	IF15.01.04	Accu	Accubak compleet
44	1	IF15.01.048	Support radiator	Radiator steun
45	1	IF15.01.05	Support motor	Radiator motor gaskabel steun
46	1	IF15.01.06	Mudguard	Treeplaat met spatbord
47	1	IF15.01.060	Tank rubber 1	Tankrubber 1
48	1	IF15.01.061	Tank rubber 2	Tankrubber 2
49	1	IF15.01.062	Tank rubber 3	Tankrubber 3
50	1	IF15.01.063	Tank rubber 4	Tankrubber 4
51	2	IF15.01.064	Tank rubber 5	Tankrubber 5
52	1	IF15.01.065	Tank rubber 6	Tankrubber 6
53	1	IF15.01.066	Tank rubber 7	Tankrubber 7
54	4	IF15.01.067	Tank rubber 8	Tankrubber 8
55	1	IF15.01.07	Support motor	Radiator motor steun
56	1	IF15.01.072	Gas handle spring holder	Gashendel veer houder
57	1	IF15.01.079	Support change valve	Montage steun Wisselventiel
58	1	IF15.01.08	Angle exhaust pipe	Uitlaat bocht
59	1	IF15.01.084	Clamp exhaust pipe	Uitlaat klem
60	1	IF15.01.09	Top cover plate motor	Motorkap deksel
61	1	IF15.01.090	Rod Ø 8 L=110	Staf rond 8 L=110
62	1	IF15.01.091	Rod Ø 8 L=150	Staf rond 8 L=150
63	1	IF15.01.10	Left cover plate motor	Motorkap zijplaat L
64	1	IF15.01.11	Right cover plate motor	Motorkap zijplaat R
65	1	IF15.01.14	Support exhaust pipe	Uitlaat steun
66	1	IF15.01.15	Radiator dirt trap	Radiator vuilvanger
67	1	IF15.01.16	Hose bracket	Slangbeugel
68	1	IF15.01.200	Electric and control parts package	Elektra en aandrijfdelen pakket
69	1	M30 x 180 - DIN 931	Hex bolt M30 x 180 - DIN 931	Zeskantbout - DIN 931

Sand container

IF15.02 - Bunker



Sand container

IF15.02 - Bunker

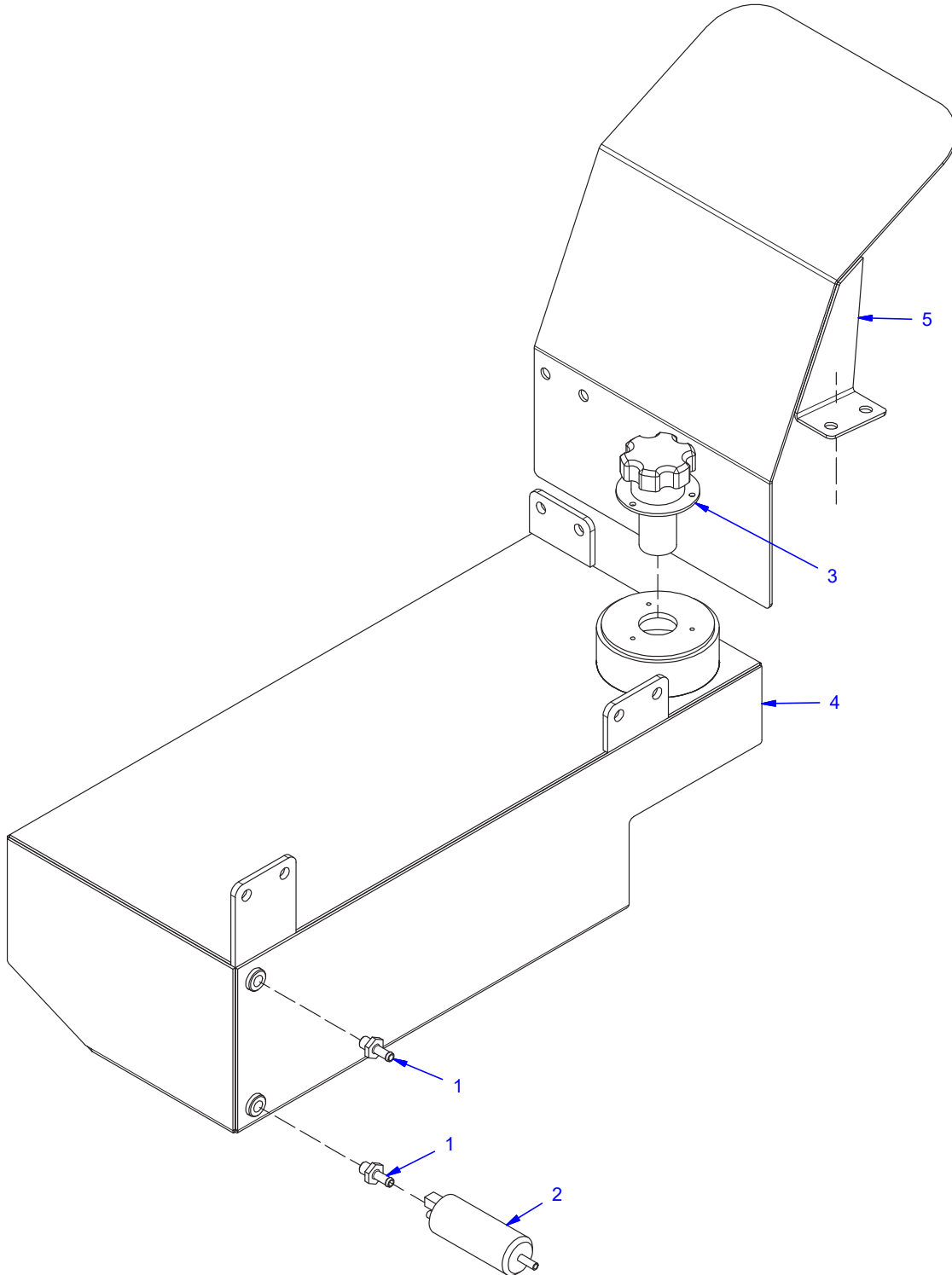


Item	Quantity	Part number	Description	Omschrijving
1	10	0201-0016	Bearing UCFL207	Lager UCFL207
2	2	0305-0001	Locking pin 11mm	borgpen 11mm
3	4	0306-0001	Locking pin 9,5x68	Buisborgpen 9,5x68
4	2	0306-0004	Square Locking pin 8 x 70	vierkante buisborgpen 8 x 70
5	1	0306-0005	Tube locking pin 12x 55	buisborgpen 12x 55
6	2	0405-0006	Chain sprocket 3/4" t14 ø25	Ketting wiel 3/4" t14 ø25
7	5	0405-0024	Chain sprocket 3/4" t13 D16 with bearing	Ketting wiel 3/4" t13 D16 met lager
8	4	0405-0039	Chain sprocket 3/4" t18 D35 1xkey 2xscrew	Ketting wiel 3/4" t18 D35 1xspie 2xstel
9	2	0406-0002	End chain 3/4"x7/16"	Sluitschakel 3/4"x7/16"
10	2	0501-0007	Hydraulic motor OMR250 D25 + key	Hydromotor OMR250 D25 met spie
11	1	0502-0024	Cilinder 100 (267-367) >16/25	Cilinder 100 (267-367) >16/25
12	1	0506-0031	Pressure reducing valve double acting	Druk reduceer ventiel dubbelwerkend
13	1	0603-0003	Handle D25mm	handvatten D25mm
14	5	10 x 8 x 40 - DIN 6885	Parallel key 10 x 8 x 40 - DIN 6885	Inlegspie 10 x 8 x 40 - DIN 6885
15	2	1102-0014	Bonnet mount cpl. 145 mm	Motor kapbevest. cpl. 145 mm
16	4	1204-0002	Insert square 40x40x4 mm	Inzetstuk vierkant 40x40x4 mm
17	1	IF15.02.01	Sand container	Bunker
18	1	IF15.02.019	Bumper	Bumper
19	4	IF15.02.02	Weiler tube	Woeler buis
20	5	IF15.02.022	Axle 35 h6 L=1750	As 35 h6 L=1750
21	8	IF15.02.025	Container sliding link	Bunker schuif armpjes
22	1	IF15.02.03	Flap	Schuif
23	1	IF15.02.04	Control flap	Schuif bediening
24	1	IF15.02.043	Adjustment flap	Verstelarm schuif
25	1	IF15.02.05	Support adjustment flap	Steun schuifbediening
26	1	IF15.02.052	Adjustment plate flap demountable	Verstelplaat schuif demonteerbaar
27	1	IF15.02.053	Roller chain 3-4 x7-16 12B 1500mm 0406-0009	Rollenketting 3-4 x7-16 12B 1500mm 0406-0009
28	1	IF15.02.054	Roller chain 3-4 x7-16 12B 1500mm 0406-0009	Rollenketting 3-4 x7-16 12B 1500mm 0406-0009
29	10	IF15.02.055	Seal bearing	Afdichting lager
30	1	IF15.02.06	Wall 600 x 1560	Schot 600 x 1560
31	1	IF15.02.062	Cilinder locking plate	Cilinder borgstrip
32	2	IF15.02.07	Wall 600 x 1240	Schot 600 x 1240
33	2	IF15.02.08	Wall 400 x 1560	Schot 400 x 1560
34	2	IF15.02.09	Wall 400 x 1240	Schot 400 x 1240
35	4	IF15.02.10	Wall leg 500mm	Schot poot 500mm
36	4	IF15.02.11	Wall leg 700mm	Schot poot 700mm
37	1	IF15.02.12	Arm adjustment flap	Arm schuif bediening
38	1	IF15.02.13	Upper support hydraulic motor	Hydra motor steun boven
39	1	IF15.02.14	Support plate chain sprockets	Steunplaat kettingwielen
40	1	IF15.02.15	Chain cover	Kettingkast
41	1	IF15.02.16	Transmission plate flap	overbrengings arm schuif
42	1	IF15.02.17	Flap manual control	Schuif hand bediening
43	1	IF15.02.18	Choise part hand - hydraulic	Keuze stuk Hand hydraulisch
44	1	IF15.02.19	Support cilinder	Ophanging cilinder
45	1	IF15.02.20	Choise part hand - hydraulic	Keuzen stuk hand / hydrau
46	1	IF15.02.21	Down support hydraulic motor	hydra motor steun onder
47	1	IF15.02.22	Attachement flap control	Verlengstuk klep bediening
48	1	IF15.02.23	Wall 600 x 1560	Schot 600 x 1560
49	1	IF15.05.01	Raid protection 1	inval beveiliging 1
50	1	IF15.05.02	Raid protection 2	inval beveiliging 2
51	2	IF15.05.019	Raid protection conduction	invalbeveiliging geleiders
52	1	0505-0004	Ball valve 3-way 1/2" bsp L bore	Kogelkraan 3-weg 1/2" bsp L boring
53	1	0405-0055	Chain sprocket 3/4" t24 D30 1xkey 2xscrew	Ketting wiel 3/4" t24 D30 1xspie 2xstel
54	1	IF15.02.24	Weiler axle heavy	woeleras zwaar

Fuel tank

IF15.03.02 - Brandstoftank

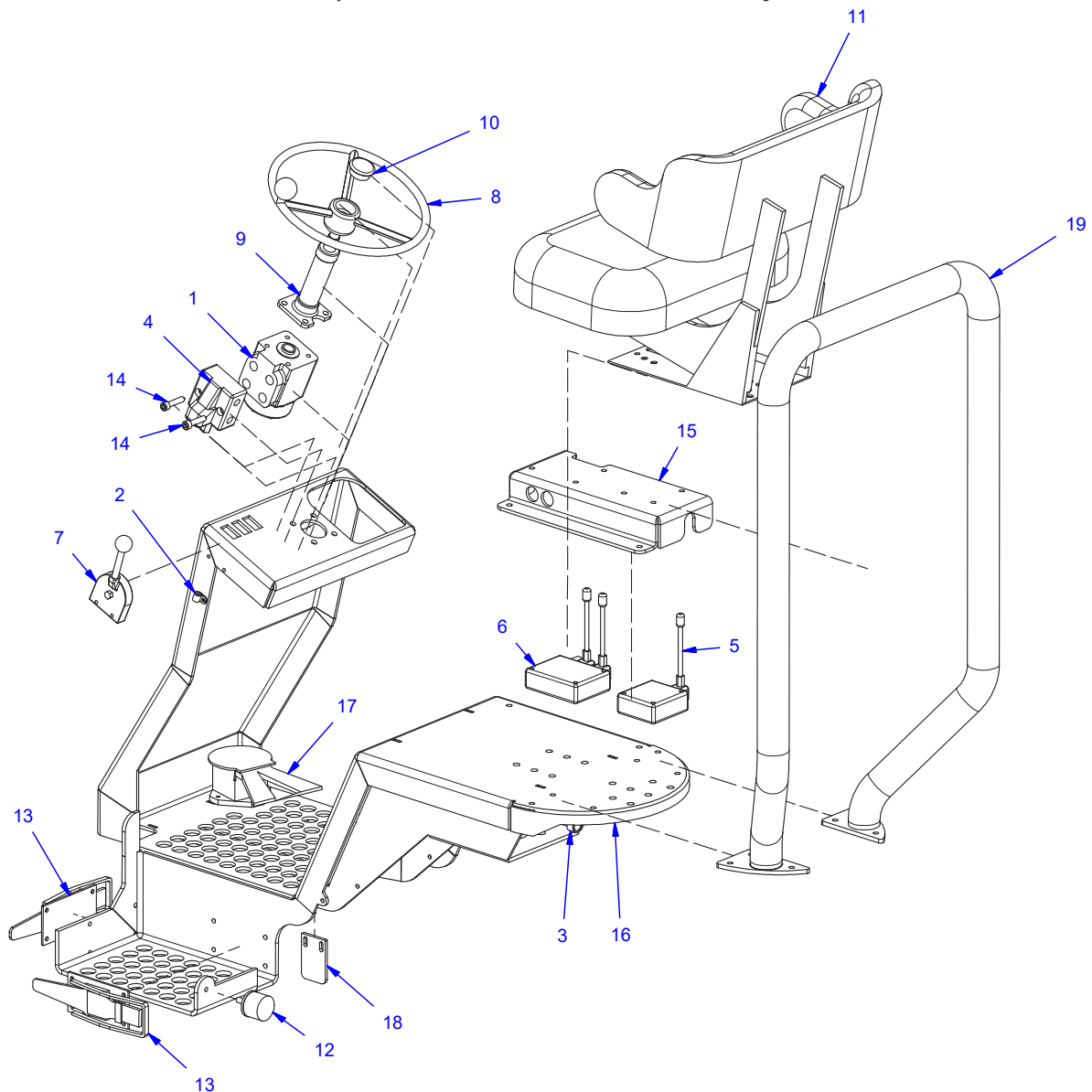
Item	Quantity	Part number	Description	Omschrijving
1	2	2002-0001	Hoses pilar LNH84 Coupling 1/4"	Slang pilaar LNH84 Koppeling 1/4"
2	1	2002-0002	Feed pump electric ER200804KR	Opvoerpomp elektrisch ER200804KR
3	1	2002-0004	Filling air filter 118/5/97 Fuel for diesel tank	Vul beluchtingfilter 118/5/97 Fuel voor diesel tank
4	1	IF15.03.04	Fuel tank	Brandstoftank
5	1	IF15.03.05	Mudguard fuel tank	Spadbord brandstoftank



Control seat

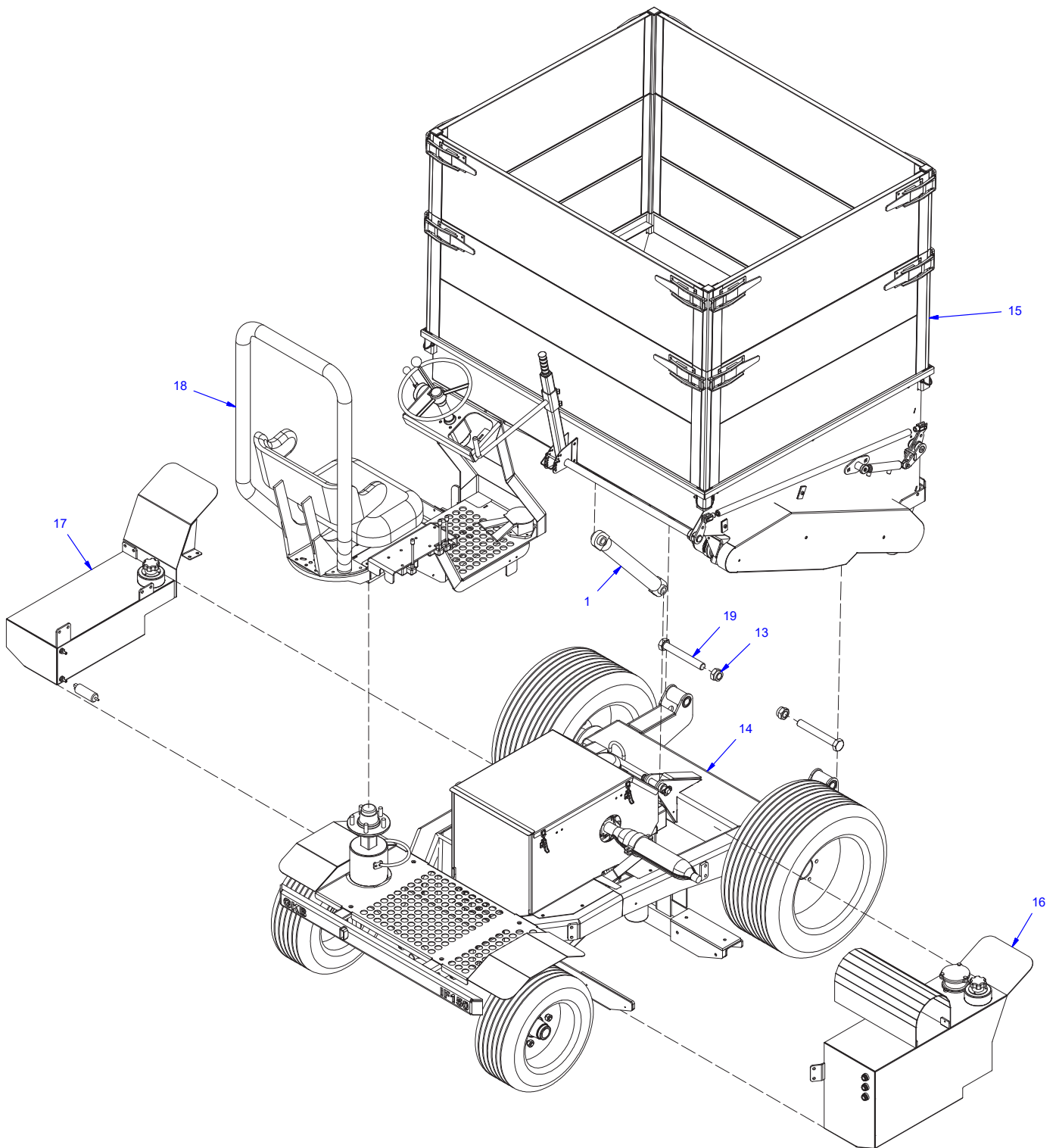
IF15.04 - Draaibare bedieningsstoel

Item	Quantity	Part number	Description	Omschrijving
1	1	0501-0025	Orbitrol HKUS 80/5-100	Orbitrol HKUS 80/5-100
2	1	0504-0020	Hose clamp 6mm	Leidingklem 6mm
3	1	0504-0022	Hose clamp 18mm	Leidingklem 18mm
4	1	0506-0023	Priority valve PRD40-7	Prioriteitsventiel PRD40-7
5	1	0506-0029	SD5-1 hose vent 1 side locked	SD5-1 ledigventiel 1 zijde gearreteerd
6	1	0506-0030	SD5 2 hose vent with pressure transit	SD5 2 ledigventiel met drukdoorvoer
7	1	0602-0001	Handle Magura	Hendel Magura
8	1	0604-0001	Steering wheel 300mm	Stuurwiel 300mm
9	1	0604-0002	Steering column 150mm	Stuurkolom 150mm
10	1	0604-0003	Steering wheel cap	Stuurwieldop
11	1	0605-0001	PVC seat mechanic suspension	PVC zitting mechanisch geveerd
12	1	0801-0004	Vibration damper 5040 M10	Trillingsdemper 5040 M10
13	2	1102-0010	Valve attacher	klepaantrekker
14	2	9902-0008	Hexagon socket head cap screw - DIN 912 M10 x 1 x 45 12.9	Cilinderschroef met binnenzeskant - DIN 912 M10 x 1 x 45 12.9
15	1	IF15.04.006	Hydraulic valve mounting	Hydrauventiel bev
16	1	IF15.04.01	Turning seat	Draaistoel
17	1	IF15.04.015	Servo Pedal HPVP01V1	Servopedaal Teen Teen
18	1	IF15.04.016	Control plate 8/2	Bediening plaat 8/2
19	1	IF15.04.02	Safety bar	Valbeugel



Infiller 150

IF150



Infiller 150

IF150



Item	Quantity	Part number	Description	Omschrijving
1	1	0502-0022	Cilinder 325 (550-875) D30/50 Top link	Cilinder 325 (550-875) D30/50 Topstang
2	2	1501-0003	Safety sticker clamp hazard	Veiligheidssticker klemgevaar
3	1	1501-0004	Safety sticker for periodic maintenance	Veiligheidssticker periodiek onderhoud
4	1	1501-0005	Safety sticker Follow the maintenance instructions	Veiligheidssticker Houd u aan de onderhoudvoor- schriften
5	1	1501-0006	Safety sticker Lubricate	Veiligheidssticker smeren
6	1	1501-0011	Safety sticker clamping danger belt cabinet	Veiligheidssticker klemgevaar snarenkast
7	4	1501-0012	Safety sticker danger of hinging parts	Veiligheidssticker klemgevaar schanierende delen
8	4	1501-0013	Safety sticker swiveling hazard	Veiligheidssticker zwenkgevaar
9	1	1501-0022	Safety sticker hearing protection	Veiligheidssticker gehoorbescherming
10	1	1501-0027	Safety sticker Insert safety strip	Veiligheidsticker veiligheid strip plaatsen
11	1	1501-0028	Safety sticker Hot surface	Veiligheidsticker Heet oppervlakte
12	4	1503-0010	GKB Sticker 300 mm	GKB Stikker 300 mm
13	2	Borgmoer M30 - DIN 985 Staal ELVZ	Lock nut M30 - DIN 985	Borgmoer M30 - DIN 985 Staal ELVZ
14	1	IF15.01	Frame	Frame
15	1	IF15.02	Sand container	Bunker
16	1	IF15.03.01	Hydraulic tank	Hydraultank
17	1	IF15.03.02	Fuel tank	Brandstofftank
18	1	IF15.04	Control seat	Draaistoel
19	2	M30 x 220 - DIN 931	Hex bolt M30 x 220 - DIN 931	Zeskantbout M30 x 220 - DIN 931