



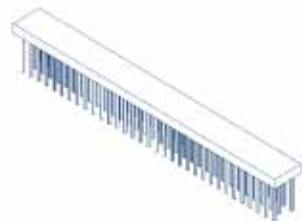
Parts lists Brush

BR200-400

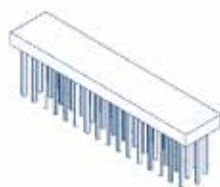
V20151222

Wearing parts

Slijtdelen



1



2

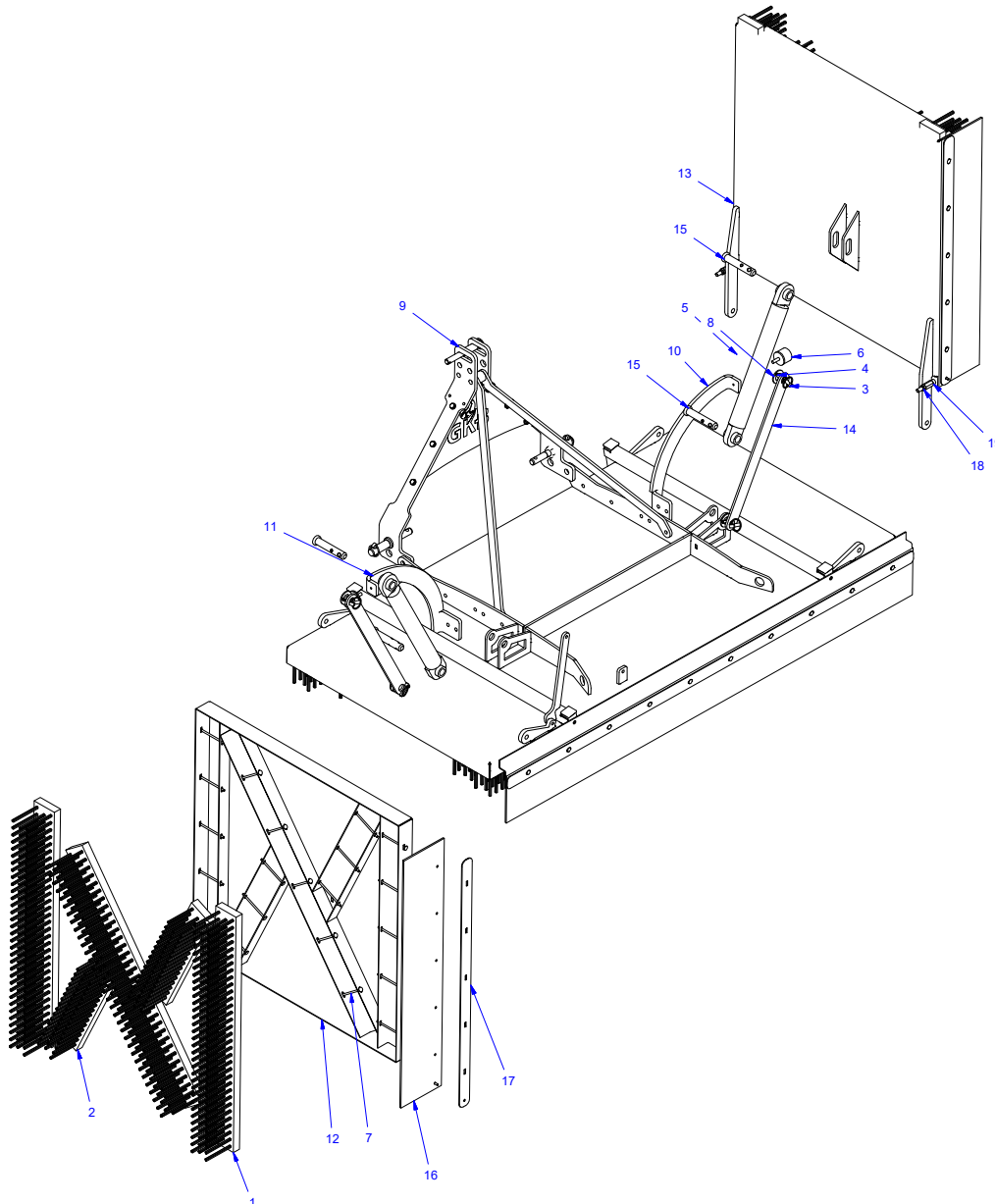
Item	Quantity	Part number	Discription	Omschrijving
1*	4	0110-0001	Brush 1000x100x30 hoh30 H130x3	Borstel 500x100x30 hoh30 H130x3
2**	8/14	0110-0023	Brush 500x100x30 hoh30 H130x3	Borstel 1000x100x30 hoh30 H130x3
*	4	0110-0001	Only for BR400	
**	8	0110-0023	BR200	
	14	0110-0023	BR400	

Brush 400

Brush 400



Item	Quantity	Part number	Description	Omschrijving
1	6	0110-0001	Brush 1000x100x30 hoh30 H130x3	Borstellat 1000x100x30 hoh30 H130x3
2	4	0110-0023	Brush 500x100x30 hoh30 H130x3	Borstellat 500x100x30 hoh30 H130x3
3	4	0305-0001	pin 11mm	borgpen 11mm
4	4	0307-0003	Roll pin 8x50	Spanstift 8x50
5	2	0502-0022	Cilinder 325 (550-875) D30/50	Cilinder 325 (550-875) D30/50 Topstang
6	2	0801-0004	Vibration damper 5040 M10	Trillingsdemper 5040 M10
7	16	9913-0001	Cup Head Square Neck Bolt M6x120	Slotbout M6x120
8	4	A 27 - DIN 125	Sluitring ELVZ M27 - DIN 125	Sluitring ELVZ M27 - DIN 125
9	1	BR200	Brush 200	Brush 200
10	1	BR40.01.019	Stop folding 1	Banaan opklappen 1
11	1	BR40.01.020	Stop folding 2	Banaan opklappen 2
12	1	BR40.02.01	Deck right	Dek rechts
13	1	BR40.02.02	Deck left	Dek links
14	2	BR40.04.003	Lock strip side decks	Strip borging zijdeken
15	4	BR40.04.004	Pin (1401-0011)	Pen bewerkt (1401-0011)
16	2	BR40.04.005	Rubber flap side deck 1050x200	Rubber flap zijdek 1050x200
17	2	BR40.04.006	Strip rubber flap side deck	Strip rubberflap zijdek
18	4	M12 - DIN 985	Hex nut M12 - DIN 985	Borgmoer M12 - DIN 985

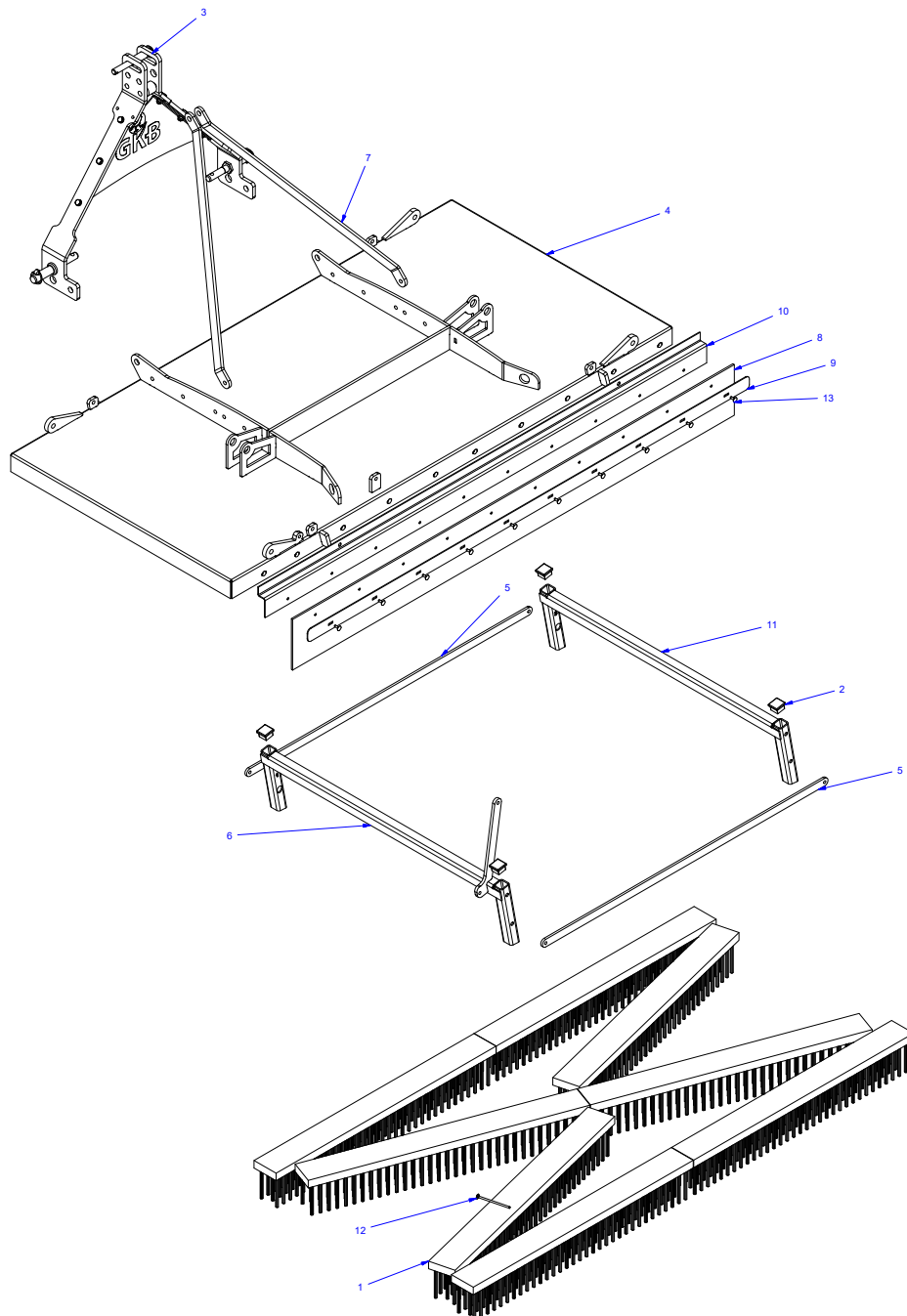


Brush 200

Brush 200



Item	Quantity	Part number	Description	Omschrijving
1	8	0110-0001	Brush 1000x100x30 hoh30 H130x3	Borstel 1000x100x30 hoh30 H130x3
2	4	1204-0002	Cap square 40x40x4 mm	Inzetstuk vierkant 40x40x4 mm
3	1	1403-0001	Three point hitch	Montagesam. Bok
4	1	BR00.01.01	Mid deck	Middendek
5	2	BR00.04.005	Strip support leg	strip steunpoot
6	1	BR00.04.01	Supportleg with hendle	Steunpoot met hendel
7	2	BR00.04.016	Pull strip three point hitch	trekstang bok
8	1	BR00.04.017	Rubber flap middendek 2008x200	Rubber flap middendek 2008x200
9	1	BR00.04.018	Strip rubber flap mid deck	Strip rubberflap middendek
10	1	BR00.04.019	Mounting strip rubber flap mid deck	Bevestiging strip rubberflap middendek
11	1	BR00.04.02	Support leg without handle	Steunpoot zonder hendel
12	40	M6 x 120 - DIN 603	Round Head Square Neck bolt M6 x 120 - DIN 603	Slotbout ELVZ M6 x 120 - DIN 603
13	10	M6 x 20 - DIN 603	Round Head Square Neck bolt M6 x 20 - DIN 603	Slotbout ELVZ M6 x 20 - DIN 603



Three point hitch

1403-0001 - Trekbok



Item	Quantity	Part number	Description	Omschrijving
1	2	0305-0001	pin 11mm	borgpen 11mm
2	1	0305-0003	Pin 6 mm	borgpen 6mm
3	1	1401-0006	Top link 19/25	Topstangpen met verloop 19/25
4	2	1401-0008	Lower link pin 22-28	Werktuigpen 22-28
5	1	1403-0002	Three point hitch lift	Trekbok Links
6	1	1403-0003	Tube Ø38,5x10 SL=34 in between sides	Buis Ø38.5x10 L=34 tussenbus bok
7	1	1403-0004	Mid plate	Middenplaat
8	1	1403-0005	Three point hitch right	Trekbok Rechts
9	6	A 10,5 - DIN 125	Washer M10 - DIN 125	Sluitring ELVZ M10 - DIN 125
10	6	M10 - DIN 985	Hex nut M10 - DIN 985	Borgmoer M10 - DIN 985
11	6	M10 x 30 - DIN 933	Hex bolt M10 x 30 - DIN 933	Tapbout zeskant ELVZ M10 x 30 - DIN 933

