



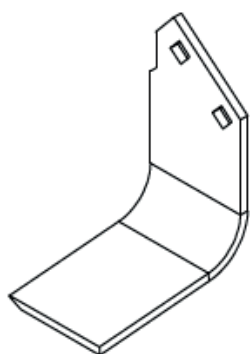
Parts list Stoneburier 140

SB140

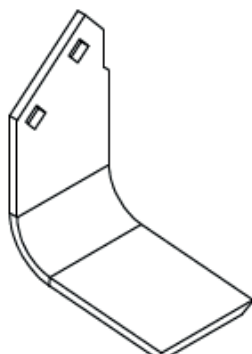
V190828

Wearing parts

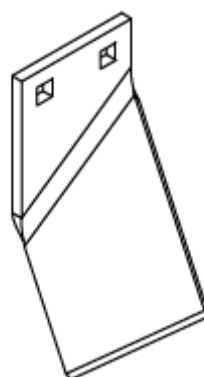
Slijtdelen



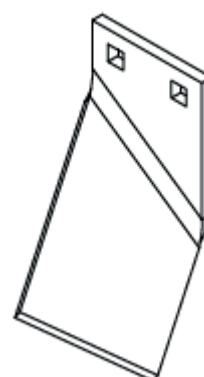
1



2



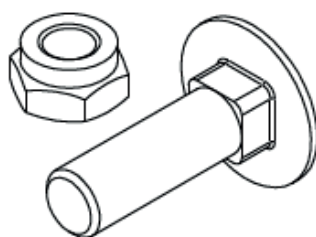
3



4



5



6

Wearing parts

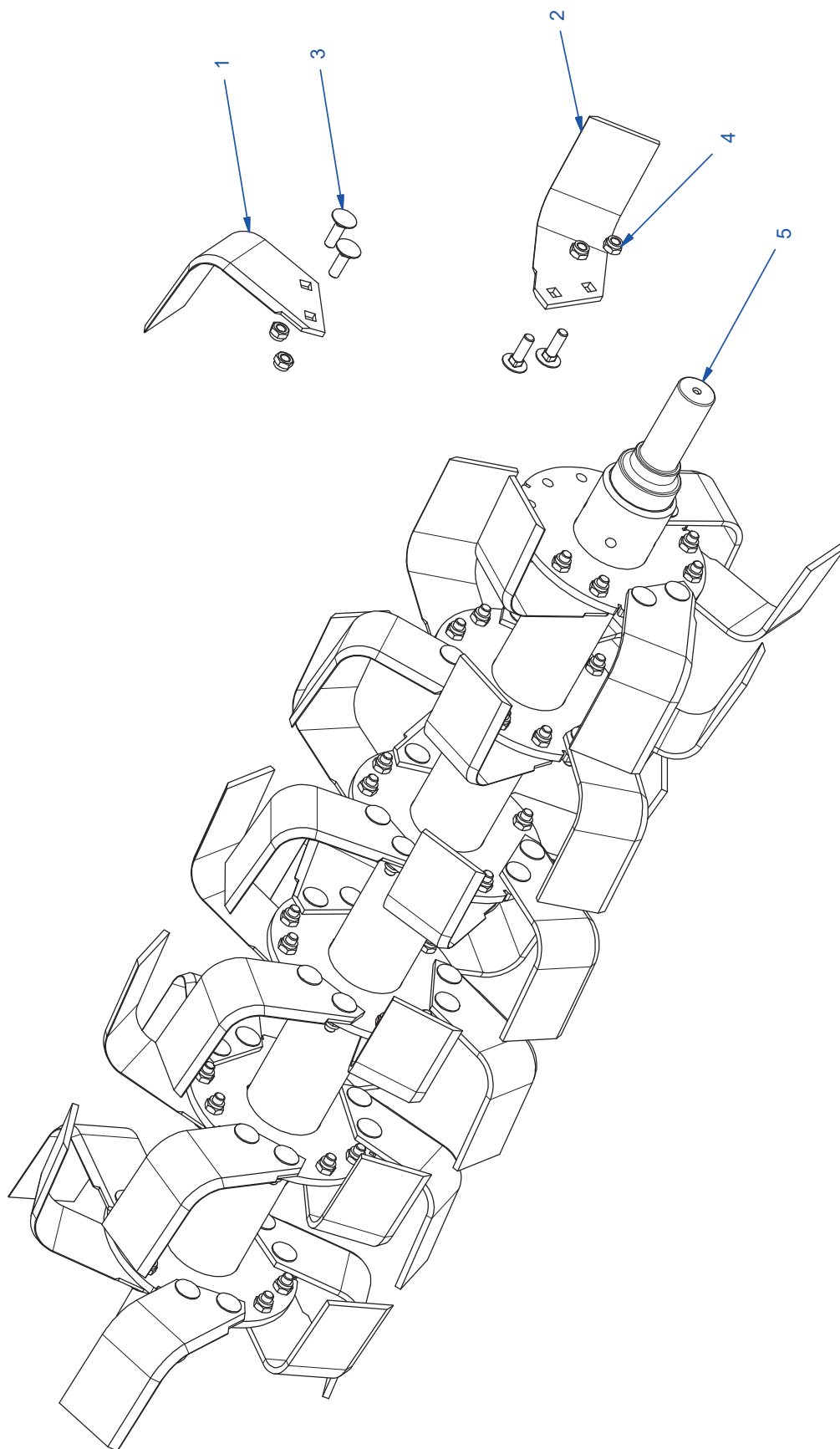
Slijtdelen



Item	Quantity	Part number	Description	Omschrijving
1	18	0104-0010	Cutting blade calibrated right	Freesmes overtopfrees gekalibreerd rechts
2	18	0104-0011	Cutting blade calibrated left	Freesmes overtopfrees gekalibreerd links
3	18	0104-0012	Frasing tooth calibrated right	Freestand overtopfrees gekalibreerd rechts
4	18	0104-0013	Frasing tooth calibrated left	Freestand overtopfrees gekalibreerd links
5	45	0111-0003	Sieve tine Ø12 350 StoneBurier	Zeeftand Ø12 350 StoneBurier
6	72	0115-0005	Carriage bolt M12x1.25x40 10,9 + moer	Freesslotbout M12x1,25x40 10,9 + moer

Rotor axle with 90° blades

SB14.02.01A - Rotoras met 90° freesmessen



Rotor axle with 90° blades

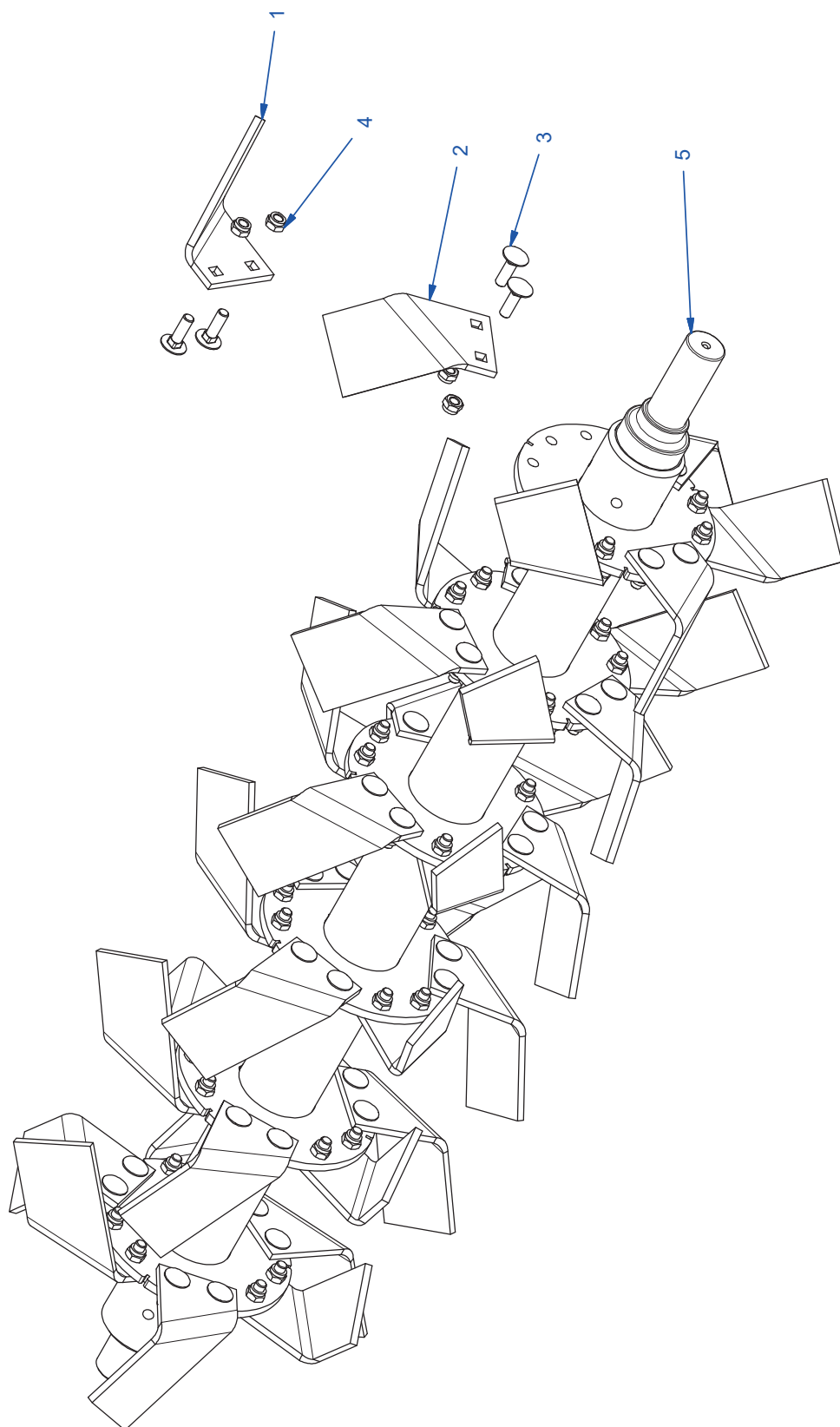
SB14.02.01A - Rotoras met 90° freesmessen



Item	Quantity	Part number	Description	Omschrijving
1	18	0104-0010	Blade SB 90° left	Freesmes SB 90° links
2	18	0104-0011	Blade SB 90° right	Freesmes SB 90° rechts
3	72	0115-0005	Knife bolt+nut Stoneburier	Freesslotbout M12x1,25x40 10,9 + moer
4	72	0115-0005-a	Nut M10 x 1,25 10.9	Moer M10 x 1,25 10.9
5	1	SB14.02.02	Rotor axle	Lassamenstelling rotor as

Rotor axle with 45° blades

SB14.02.01B - Rotoras met 45° freesmessen



Rotor axle with 45° blades

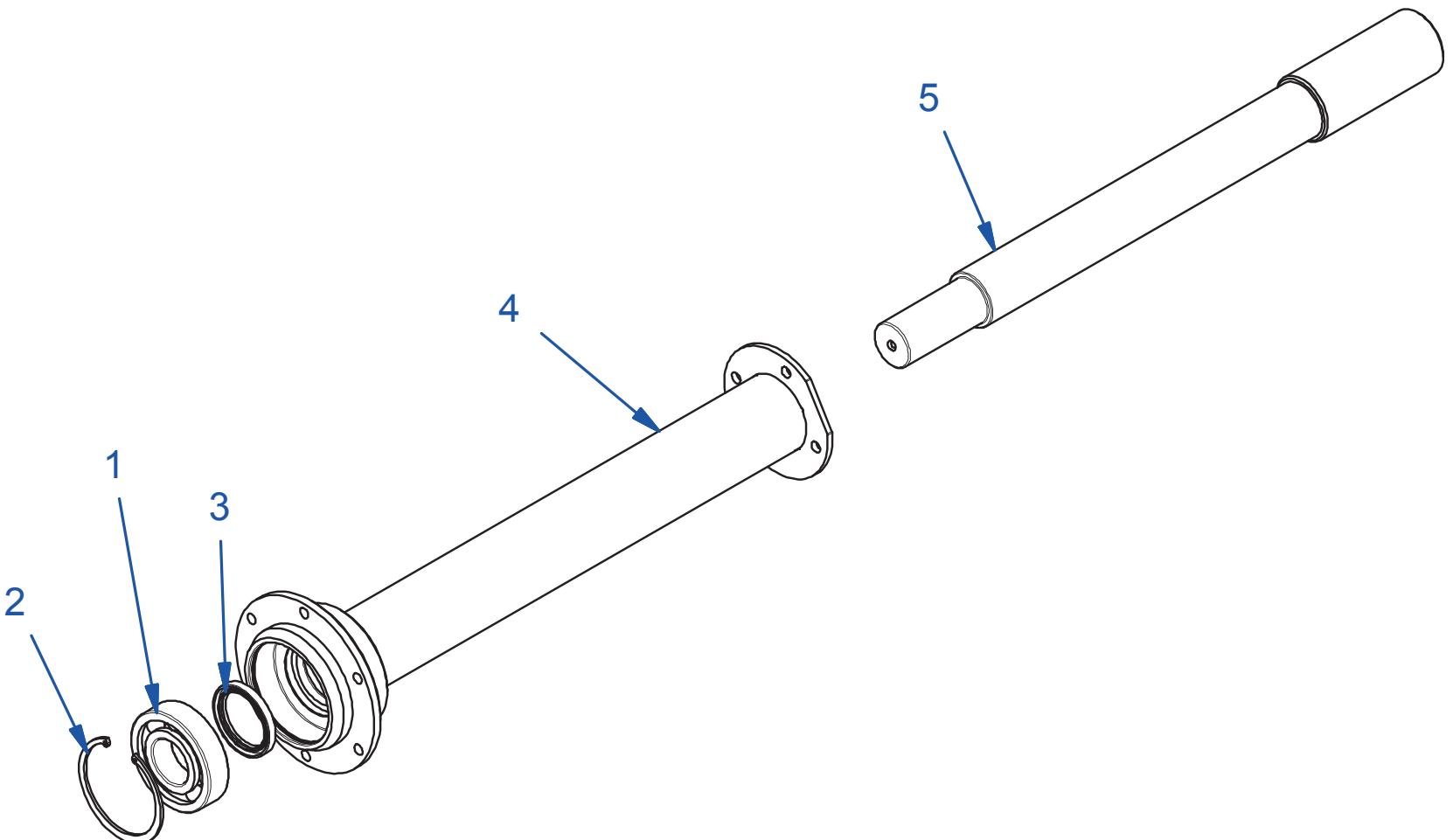
SB14.02.01B - Rotoras met 45° freesmessen



Item	Quantity	Part number	Description	Omschrijving
1	18	0104-0012	Blade SB 45° right	Freesmes SB 45° rechts
2	18	0104-0013	Blade SB 45° left	Freesmes SB 45° links
3	72	0115-0005	Knife bolt+nut Stoneburier	Freesslotbout M12x1,25x40 10,9 + moer
4	72	0115-0005-a	Nut M10 x 1,25 10.9	Moer M10 x 1,25 10.9
5	1	SB14.02.02	Rotor axle	Lassamenstelling rotor as

Extension chain cover

SB14.02.03 - Verlenging tandwielkast



Extension chain cover

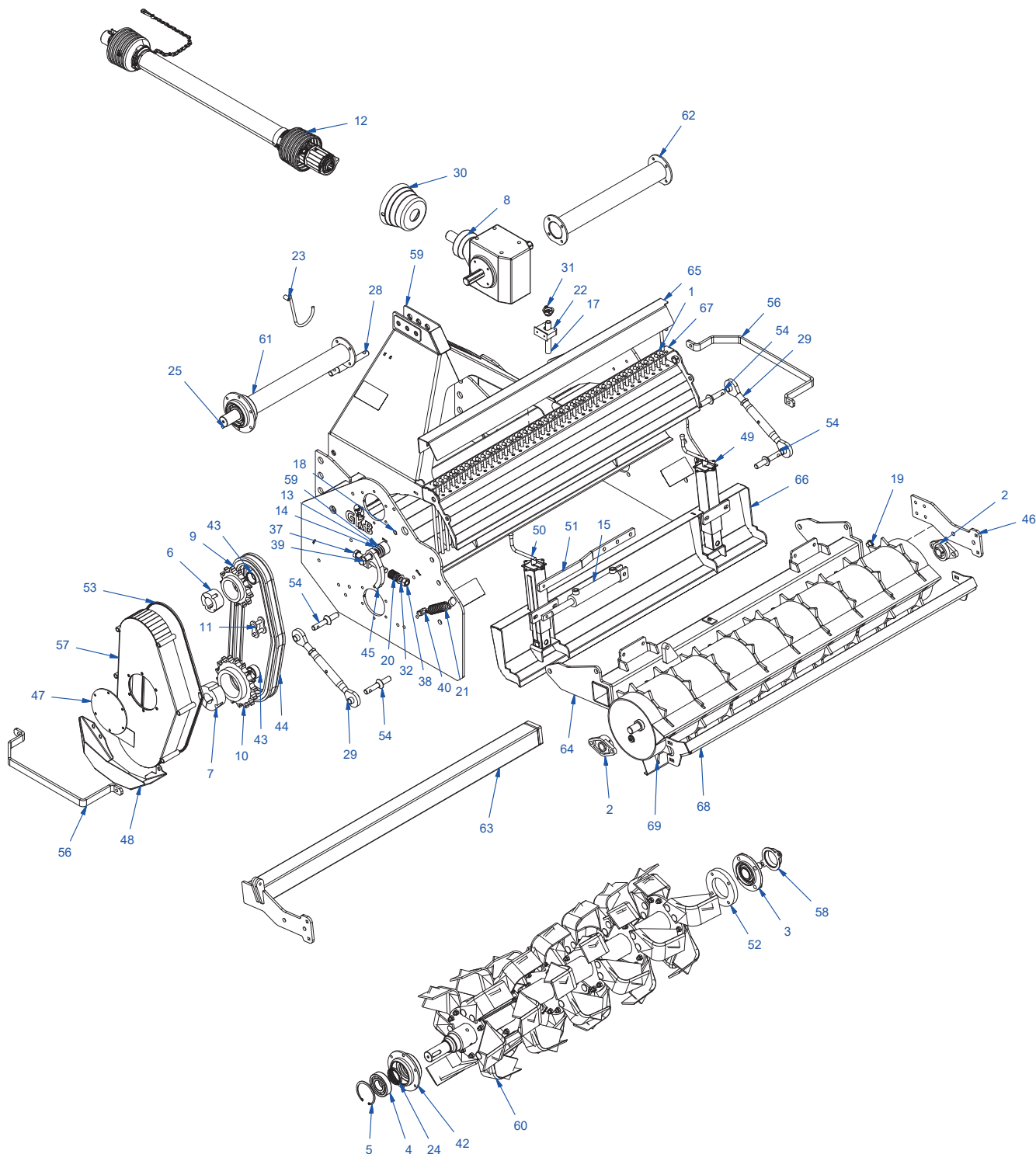
SB14.02.03 - Verlenging tandwielkast



Item	Quantity	Part number	Description	Omschrijving
1	1	0106-0006	Ballbearing 6309	Kogellager 6309
2	1	0201-0046	Circlip house DIN472 Ø100	Seegerring huis DIN472 100mm
3	1	0303-0010	Seal 55x72x8	Oliekeerring 55x72x8
4	1	PB80.03.03	Side gearbox with bearing house	Aftakking tandwielkast met lager
5	1	PB80.03.04	Axle with spline	As met klembus

Stoneburier 140

SB140



Item	Quantity	Part number	Description	Omschrijving
1	45	0111-0003	Sieve tine Ø12 350 StoneBurier	zeefstand Ø12 350 StoneBurier
2	2	0201-0015	Flange bearing UCFL206	Lager UCFL206
3	1	0201-0047	Flange bearing UCFC 209	UCFC209
4	1	0202-0011	Balbearing 6309	Kogellager 6309
5	1	0302-0007	Circlip DIN472 100mm	Seegerring huis DIN472 100mm
6	1	0401-0013	Taperlock 2517 45mm	Klembus taperlock 2517 45 mm
7	1	0401-0014	Taperlock 3020 45mm	Klembus taperlock 3020 45 mm
8	1	0402-0022	Gearbox S2071193G111	Tandwielkast S2071193G111 T-kast
9	1	0405-0028	Sprocket 1"1/2 t13 taperlock 2517	Kettingwiel 1"1/2 t13 taperlock 2517

Stoneburier 140

SB140



Item	Quantity	Part number	Description	Omschrijving
10	1	0405-0029	Sprocket 1"1/2 t17 taperlock 3020	Kettingwiel 1"1/2 t17 taperlock 3020
11	1	0406-0016	Connecting link 1"1/2 simplex	Sltuischakel 1"1/2 simplex
12	1	0409-0016	PTO W2400 L860 2x 1 "3 / 8-6d ring / pen	Aftakas W2400 L860 1x 1"3/8-6d ring/pen met Ster-slipkoppeling 1100Nm
13	2	0415-0010	Fill disk 32x52x0,5	Opvulschijf 32x52x0,5
14	2	0415-0011	Fill disk 32x52x1,0	Opvulschijf 32x52x1,0
15	1	0502-0010	Cilinder 150 ø25/40 DW	Cilinder 150 ø25/40 DW
16	1	0508-0002	Bleeder 3/8" BSP	Ontluchtingsfilter 3/8" BSP
17	1	0511-0003	Pipe nipple 1/2"x150mm	Pijpnippel verz. 1/2"x150mm
18	1	0511-0004	Elbow galvanized bi / bu 3/8 "	Knie verzinkt bi/bu 3/8"
19	4	0516-0001	Stop 1/2 BSP	Blindstop 1/2 BSP
20	1	0902-0004	Pressure spring 30x61x4	Drukveer 30x61x4 ELVZ
21	2	0903-0005	Extension spring 5x36x128	Trekveer 5x36x128 ELVZ
22	1	1102-0008	Clamp 20-30mm	Klem 20-30mm
23	1	1104-0004	PTO holder hook 200mm	Aftakashaak 200mm
24	1	1202-0005	Oil seal 55x72x8	Oliekeerring 55x72x8
25	1	14 x 9 x 40 - DIN 6885	Parallel key 14 x 9 x 40	Inlegspie 14 x 9 x 40 - DIN 6885
26	1	14 x 9 x 50 - DIN 6885	Parallel key 14 x 9 x 50	Inlegspie 14 x 9 x 50 - DIN 6885
27	1	1401-0006	Top link 19/25	Topstangpen met verloop 19/25
28	2	1401-0007	Top link 22/28	Topstangpen met verloop 22/28
29	2	1406-0001	Top link M24 315-430	Topstang M24 315-430
30	1	1801-0008	PTO cover taper 110mm	Beschermkap aftakas taps 110
31	1	2001-0001	Geka 1/2 "bi.	Geka 1/2" bi.
32	2	A 21 - DIN 125	Washer M20 DIN 125 ELVZ	Sluitering M20 DIN 125 ELVZ
33	1	M10 - DIN 985	Lock nut M10 - DIN 985	Borgmoer M10 - DIN 985
34	1	M10 x 45 - DIN 931	Hex bolt M10 x 45 - DIN 931 ELVZ	Borstbout zeskant M10 x 45 - DIN 931 ELVZ
35	1	M14 - DIN 985	Lock nut M14 - DIN 985	Borgmoer M14 - DIN 985
36	1	M14 x 50 - DIN 931	Hex bolt M14 x 50 - DIN 931 ELVZ	Borstbout zeskant M14 x 50 - DIN 931 ELVZ
37	1	M20 x 160 - DIN 931	Hex bolt M20 x 160 - DIN 931	Zeskantbout M20 x 160 - DIN 931
38	2	M20 x 2,5 - DIN 934	Nut M20 x 2,5 - DIN 934 ELVZ	Moer zeskant M20 x 2,5 - DIN 934 ELVZ
39	1	M20 x 40 - DIN 933	Hex bolt M20 x 40 - DIN 933 ELVZ	Tapbout zeskant M20 x 40 - DIN 933 ELVZ
40	2	M8 x 70 - DIN 444 A	Eye Bolt M8 x 70 - DIN 444 A	Knevelbout M8 x 70 - DIN 444 A
42	1	SB00.02.005	Bearing housing	Gedraait lagerhuis
43	2	SB00.02.007	Spacer	Aanslag tandwiel
44	1	SB00.02.008	Roller chain 1"1/2 40 links 24B-1	Rollenketting 1"1/2 40 schakels 24B-1
45	1	SB00.02.009	Chain tensioner	Kettingspanner geveerd
46	1	SB00.03.003	Side plate schrewable	Zijplaat rol schroefbaar
47	1	SB00.05.008	Closing plate	Afdekplaat kettingkast
48	1	SB00.05.009	Chain cover	Kettingkastbescherming
49	1	SB00.05.01-A	Support leg	Steunpoot A
50	1	SB00.05.01-B	Support leg	Steunpoot B
51	1	SB00.05.010	Mechanically extension roller	Mechanische verlenging rol
52	1	SB00.05.011	Cover bearing	Afdekplaat lager UCFC209
53	1	SB00.05.013	Seal chain cover	Afdichtstrip kettingkast
54	4	SB00.05.014	Top link	Topstang
55	1	SB00.05.015	Packing chain cover	Pakking kettingkast
56	2	SB00.05.016	Spacer	Afstandbeugel stone burier
57	1	SB00.05.02	Chain cover	Lassamenstelling kettingkast
58	1	SB00.05.03	Cover	lassamenstelling beschermkapje
59	1	SB14.01.01	Frame	Frame lassamenstelling
60	1	SB14.02.01	Rotor axle	Rotoras samenstelling
61	1	SB14.02.03	Extension chain cover	Samenstelling verlenging tandwielkast
62	1	SB14.02.04	Support chain cover	lassamenstelling tandwielkast versteviging
63	1	SB14.03.01	Extension roller	Lassamenstelling rol verstelling
64	1	SB14.03.02	Hinge	Lassamenstelling schanierstuk lasdeel
65	1	SB14.04.006	Cover teethplate	Afdekplaat zandtandenkap
66	1	SB14.04.01	Egalisation plate	Egaliseerplaat lassamenstelling
67	1	SB14.04.03	Sieve tine plate	Lassamenstelling zandtandenkap
68	1	SB14.05.008	Scraper	Schrapper
69	1	SB14.06.01	Roller	Lassamenstelling rol