



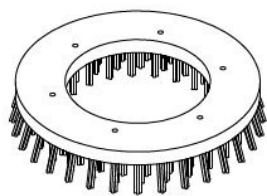
## Parts lists Renovator

RV200

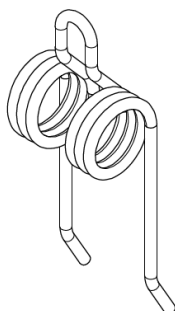
V20190208

# Wearing parts

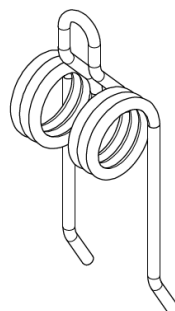
Slijtdelen



1



2



3

## Wearing parts

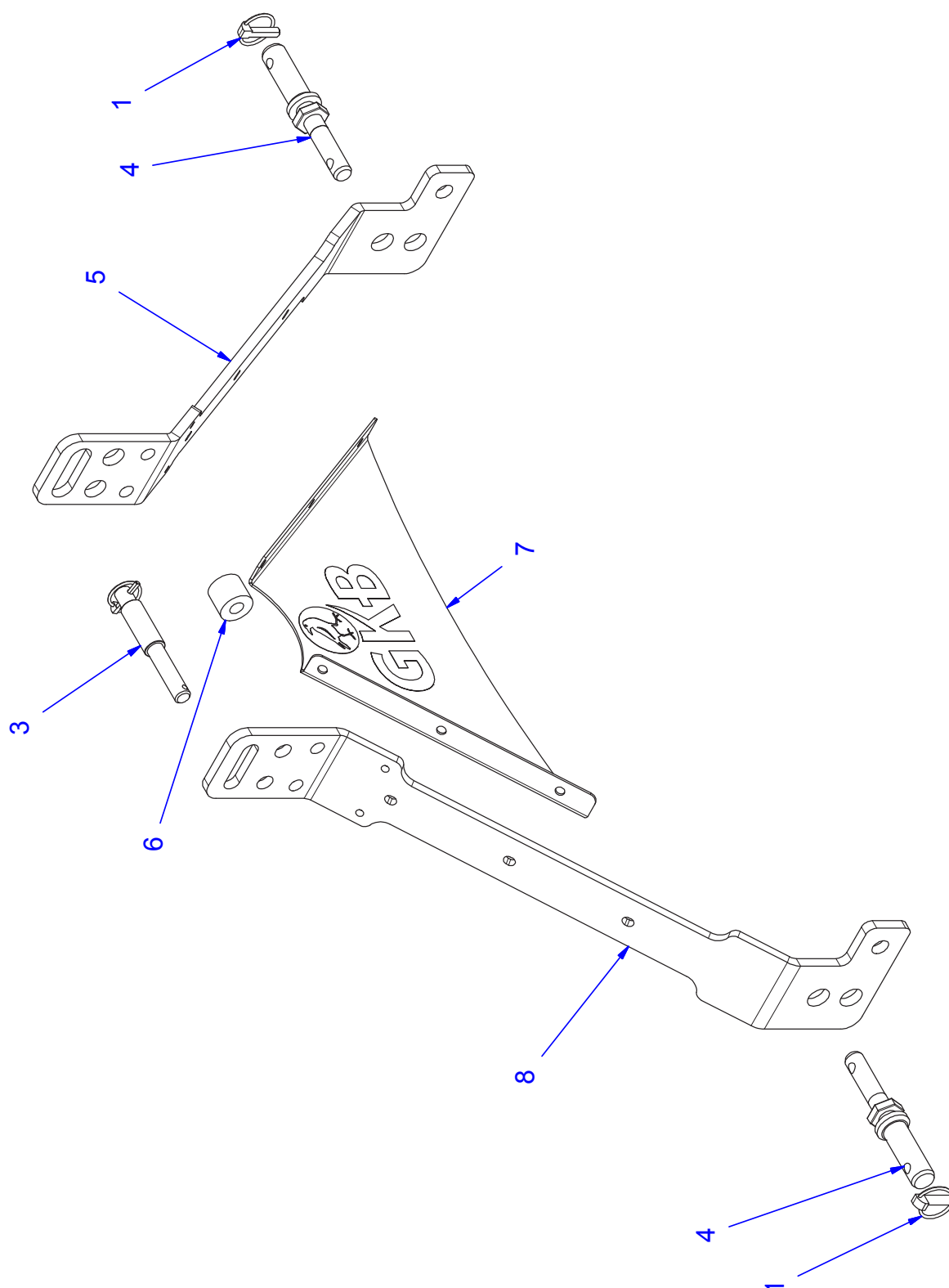
Slijtdelen



Item	Quantity	Part number	Description	Omschrijving
1	5	0110-0025	Brush plate D320x180x20 hair length 40/d3	Borstelplaat D320x180x20 haarlengte 40/d3
2	50	0111-0002	Spring tine 3 mm	Koolzaadtand 3mm
3	50	0111-0004	Spring tine 4,5 mm	Koolzaadtand 4,5mm

# Three point hitch

1403-0001 - Trekbok



## Three point hitch

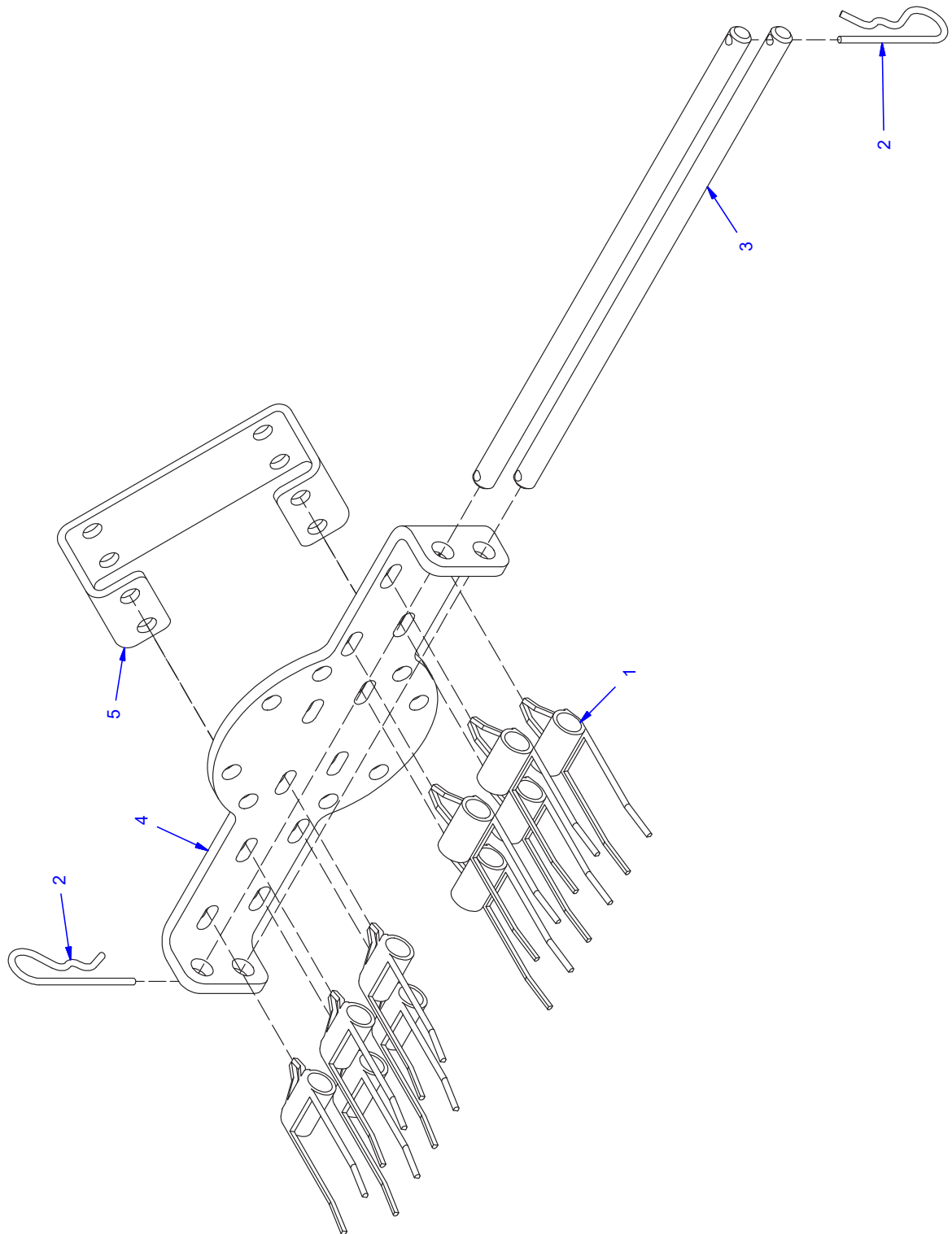
1403-0001 - Trekbok



Item	Quantity	Part number	Description	Omschrijving
1	2	0305-0001	pin 11mm	borgpen 11mm
2	1	0305-0003	Pin 6 mm	borgpen 6mm
3	1	1401-0006	Top link 19/25	Topstangpen met verloop 19/25
4	2	1401-0008	Lower link pin 22-28	Werktuigpen 22-28
5	1	1403-0002	Three point hitch lift	Trekbok Links
6	1	1403-0003	Ø40 SL=34 in between sides	Rond 40 L=34 tussenbus bok
7	1	1403-0004	Mid plate	Middenplaat
8	1	1403-0005	Three point hitch right	Trekbok Rechts

# Sam. koolzaad tandenborstel 2

RV160.06 - Assembly rapeseed tooth



## Sam. koolzaad tandenborstel 2

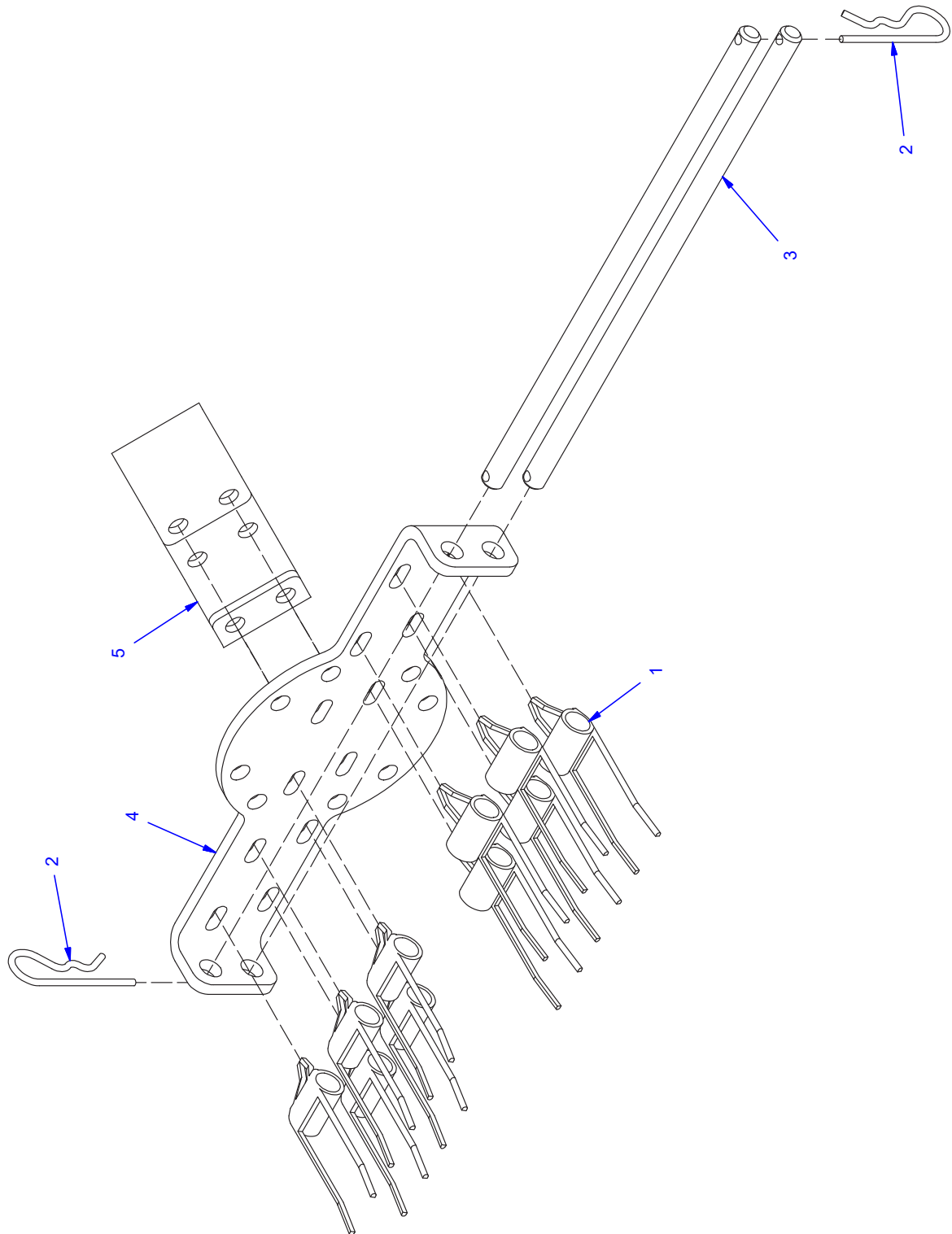
RV160.06 - Assembly rapeseed tooth



Item	Quantity	Part number	Description	Omschrijving
1	10	0111-0002	Spring tine 3 mm	Koolzaadtand 3 mm
2	2	0308-0001	Circlip 4x75	Borgveer 4x75
3	2	RV160.01.034	Rod Ø14 L=380 mm	Staf Ø14 L=380 mm
4	1	RV160.01.036	Plate holder springs	Plaat tandenhouder
5	1	RV160.01.039	Filler plate holder springs	Opvulplaat tandenborstel

# Sam. koolzaad tandenborstel 1

RV160.07 - Assembly rapeseed tooth



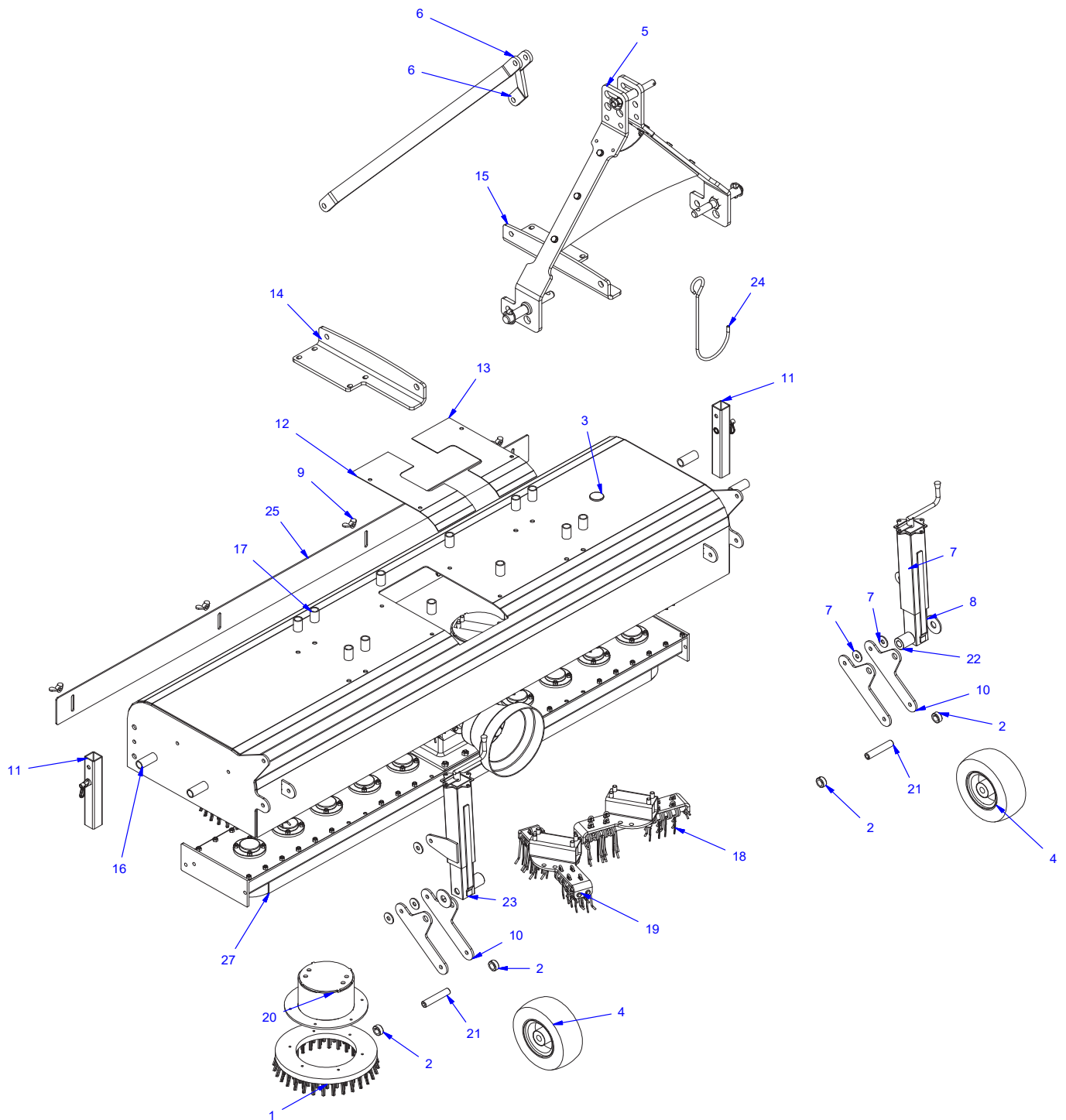
## Sam. koolzaad tandenborstel 1

RV160.07 - Assembly rapeseed tooth



Item	Quantity	Part number	Description	Omschrijving
1	10	0111-0002	Spring tine 3 mm	Koolzaadtand 3 mm
2	2	0308-0001	Circlip 4x75	Borgveer 4x75
3	2	RV160.01.034	Rod Ø14 L=380 mm	Staf Ø14 L=380 mm
4	1	RV160.01.036	Plate holder springs	Plaat tandenhouder
5	1	RV160.01.039	Filler plate holder springs	Opvulplaat tandenborstel

# Renovator 200



Item	Quantity	Part Number	Description	Omschrijving
1	6	0110-0025	Brushplate D320x180x20 hairlength 40/d3	Borstelplaat D320x180x20 haarlengte 40/d3
2	4	0303-0001	Lock collar DIN705   20 mm	Stelring DIN705   20 mm
3	1	1204-0003	Insert round 42 mm	Inzetstuk rond 42mm
4	2	1301-0017	Whiel 9x3.5-4 complete	Wiel massief 9x3.5-4 compleet as Ø20
5	1	1403-0001	Three point hitch	Montagesam. Bok
6	2	1403-0006	Pull strip three point hitch	trekstang
7	6	Carosseriering Ø13 - DIN 9021 Staal ELVZ	Washer M12 - DIN 9021 Steel ELVZ	Carosseriering M12 - DIN 9021 Steel ELVZ
8	2	Carosseriering Ø22 - DIN 9021 Staal ELVZ	Washer M20 - DIN 9021 Steel ELVZ	Carosseriering M20 - DIN 9021 Steel ELVZ
9	4	DIN 315 - M10	Wing Nut DIN 315 - M10	Vleugelmoer DIN 315 - M10
10	4	QC00.05.006	Pivot strip front wheels	Scharnierstrip voorwielen
11	2	RB04.08.00	Standing leg	Lassamenstelling Poot
12	1	RV00.01.001	Cover 1	Afdekplaatje1
13	1	RV00.01.002	Cover 2	Afdekplaatje 2
14	1	RV00.01.003	Strip Three point hitch right	Hoekijzer vaste bok rechts
15	1	RV00.01.004	Strip Three point hitch left	Hoekijzer vaste bok links
16	4	RV00.03.002	Fill bus 26,9x3 63 mm round	Vulbus Rond 26.9x3 L=63mm
17	12	RV00.03.005	Fill bus 26,9x3 40 mm round	Vulbus Rond 26.9x3 40mm
18	3	RV00.03.01	Assembly rapeseed tooth	Sam. koolzaad tandenborstel 1
19	3	RV00.03.02	Assembly rapeseed tooth	Sam. koolzaad tandenborstel 2
20	6	RV00.03.03	Plate assembly brush	Platensamenstelling borstel
21	2	RV00.04.001	Bus round 25 H6 L=113	Blank getrokken rond 20 H6 L=103
22	1	RV00.04.01	Support leg left	Lassamenstelling steunpoot links
23	1	RV00.04.02	Support leg right	Lassamenstelling steunpoot rechts
24	1	RV00.05.001	Hook PTO	Haak aftakas
25	1	RV20.01.002	Strip	Strip achterzijde
26	1	RV20.01.01	Frame	Frame
27	1	RV20.03.01	Assembly power harrow RV200	Samenstelling rotorkopeg RV200